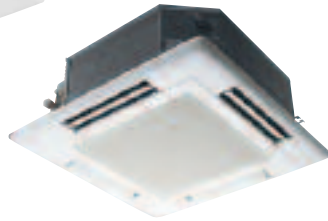




PLFY-P-VCM-E



PLFY-P-VAM-E

**PLFY-P-VCM-E**  
**PLFY-P-VAM-E**

1. SPECIFICATIONS	IU-G- 2
2. CAPACITY TABLES	
2-1a. Cooling capacity in combination with PUHY,PUY, PURY-P200, 250YGM	IU-G- 5
2-1b. Heating capacity in combination with PUHY, PURY-P200, 250YGM	IU-G- 7
2-2a. Cooling capacity in combination with PUHY,PUY,PURY-P300,350YGM / PUHY,PURY-P400YGM	IU-G- 9
2-2b. Heating capacity in combination with PUHY, PURY-P300, 350, 400YGM	IU-G- 11
2-3a. Cooling capacity in combination with PUHY,PURY-P450, 500, 550, 600, 650YGM	IU-G- 13
2-3b. Heating capacity in combination with PUHY,PURY-P450, 500, 550, 600, 650YGM	IU-G- 15
2-4a. Cooling capacity in combination with PQHY,PQRY-P200,250YGM, PQHY,PQRY-P400,500YSGM	IU-G- 17
2-4b. Heating capacity in combination with PQHY,PQRY-P200,250YGM, PQHY,PQRY-P400,500YSGM	IU-G- 19
2-5a. Cooling capacity in combination with PUMY-P100,125,140YHM	IU-G- 21
2-5b. Heating capacity in combination with PUMY-P100,125,140YHM	IU-G- 23
3. SOUND LEVELS	
3-1. Sound levels	IU-G- 25
3-2. NC curves	IU-G- 25
4. EXTERNAL DIMENSIONS	IU-G- 27
5. ELECTRICAL WIRING DIAGRAMS	IU-G- 29
6. TEMPERATURE/AIRFLOW DISTRIBUTIONS	
6-1. Temperature distributions	IU-G- 31
6-2. Airflow distributions	IU-G- 33
7. Optional parts for PLFY-P-VAM-E	IU-G- 34

Cassette ceiling	P20	P25	P32	P40	P50	P63	P71	P80	P100	P125	P140	P200	P250
	0.8HP	1.0HP	1.3HP	1.6HP	2.0HP	2.5HP	2.8HP	3.2HP	4.0HP	5.0HP	5.6HP	8.0HP	10.0HP
PLFY-P-VCM-E	●	●	●	●									
PLFY-P-VAM-E			●	●	●	●		●	●	●			

# 1. SPECIFICATIONS

R410A Data G2

Model			PLFY-P20VCM-E	PLFY-P25VCM-E	PLFY-P32VCM-E	PLFY-P40VCM-E				
Power source			1-phase 220-240V 50Hz							
Cooling capacity (Nominal)	*1	kW	2.2	2.8	3.6	4.5				
		kcal / h	1,900	2,400	3,100	3,900				
		Btu / h	7,500	9,600	12,300	15,400				
	*2	kcal / h	2,000	2,500	3,150	4,000				
		Power input	kW	0.05	0.05	0.06	0.06			
Current input		A	0.23	0.23	0.28	0.28				
Heating capacity (Nominal)	*3	kW	2.5	3.2	4.0	5.0				
		kcal / h	2,200	2,800	3,400	4,300				
		Btu / h	8,500	10,900	13,600	17,100				
	Power input	kW	0.05	0.05	0.06	0.06				
		Current input	A	0.23	0.23	0.28	0.28			
External finish			Galvanized steel sheet, with grey heat insulation							
External dimension H x W x D		mm	208 x 570 x 570	208 x 570 x 570	208 x 570 x 570	208 x 570 x 570				
		in.	8-1/4" x 22-1/2" x 22-1/2"	8-1/4" x 22-1/2" x 22-1/2"	8-1/4" x 22-1/2" x 22-1/2"	8-1/4" x 22-1/2" x 22-1/2"				
Net weight		kg (lb)	15.5 (35)	15.5 (35)	17 (38)	17 (38)				
Decoration panel	Model		SLP-2AA	SLP-2AA	SLP-2AA	SLP-2AA				
	External finish		White Munsell(0.7Y 8.59/0.97)							
	Dimension		mm	20 x 650 x 650	20 x 650 x 650	20 x 650 x 650	20 x 650 x 650			
	H x W x D		in.	13/16" x 25-5/8" x 25-5/8"	13/16" x 25-5/8" x 25-5/8"	13/16" x 25-5/8" x 25-5/8"	13/16" x 25-5/8" x 25-5/8"			
	Net Weight		kg (lb)	3 (7)	3 (7)	3 (7)	3 (7)			
	Cord heater		kW	0.015	0.015	0.015	0.015			
Heat exchanger			Cross fin & copper tube							
FAN	Type x Quantity		Turbo fan x 1							
	External static press.		0Pa (0mmH <sub>2</sub> O)	0Pa (0mmH <sub>2</sub> O)	0Pa (0mmH <sub>2</sub> O)	0Pa (0mmH <sub>2</sub> O)				
	Motor type		Single phase induction motor							
	Motor output		kW	0.011	0.015	0.02	0.02			
	Driving mechanism		Direct-driven by motor							
	Airflow rate		m <sup>3</sup> / min	8-9-10	8-9-10	8-9-11	8-9-11			
L / s			133-150-167	133-150-167	133-150-183	133-150-183				
cfm			283-318-353	283-318-353	283-318-388	283-318-388				
Noise level (Low-Mid-High) (measured in anechoic room)		dB <A>	28-31-35 (230V)	28-31-37 (230V)	29-33-38 (230V)	30-34-39 (230V)				
Insulation material			Polyethylene foam (softlon FR)							
Air filter			PP honeycomb fabric (long life type)							
Protection device			Fuse							
Refrigerant control device			LEV							
Connectable outdoor unit			R410A, R407C, R22 CITY MULTI							
Diameter of refrigerant pipe	Liquid	mm (in.)	ø6.35 (ø1/4") Flare	ø6.35 (ø1/4") Flare	ø6.35 (ø1/4") Flare	ø6.35 (ø1/4") Flare				
	Gas	mm (in.)	ø12.7 (ø1/2") Flare	ø12.7 (ø1/2") Flare	ø12.7 (ø1/2") Flare	ø12.7 (ø1/2") Flare				
Diameter of drain pipe		mm (in.)	O.D. 32 (1-1/4")	O.D. 32 (1-1/4")	O.D. 32 (1-1/4")	O.D. 32 (1-1/4")				
Drawing	External		IU-VRG01N654							
	Wiring		IU-VRG79N625							
	Refrigerant circle		-							
Standard attachment	Document		Installation manual, Instruction book							
	Accessory		Drain hose VP-25 (flexible joint)							
Remark	Optional parts		Decoration panel : SLP-2AA *PLFY-P-VCM-E should use together with SLP-2AA.							
	Installation		Details on foundation work, duct work, insulation work, electrical wiring, power source switch, and other items shall be referred to							
<b>Note :</b> <table border="0" style="width:100%; border-collapse: collapse;"> <tr> <td style="width:33%; vertical-align: top;">                     *1 Nominal cooling condition                      Indoor : 27°CDB/19°CWB (81°FDB/66°FWB)                      Outdoor : 35°CDB (95°FDB)                      Pipe length : 7.5 m (24-9/16 ft)                      Level difference : 0 m (0 ft)                 </td> <td style="width:33%; vertical-align: top;">                     *2 Nominal cooling condition                      27°CDB/19.5°CWB (81°FDB/67°FWB)                      35°CDB (95°FDB)                      5 m (16-3/8 ft)                      0 m (0 ft)                 </td> <td style="width:33%; vertical-align: top;">                     *3 Nominal heating condition                      20°CDB (68°FDB)                      7°CDB/6°CWB (45°FDB/43°FWB)                      7.5 m (24-9/16 ft)                      0 m (0 ft)                 </td> <td style="width:15%; vertical-align: top; text-align: center;">                     Unit converter                      kcal = kW x 860                      Btu/h = kW x 3,412                      cfm = m<sup>3</sup>/min x 35.31                      lb = kg / 0.4536                 </td> </tr> </table>							*1 Nominal cooling condition Indoor : 27°CDB/19°CWB (81°FDB/66°FWB) Outdoor : 35°CDB (95°FDB) Pipe length : 7.5 m (24-9/16 ft) Level difference : 0 m (0 ft)	*2 Nominal cooling condition 27°CDB/19.5°CWB (81°FDB/67°FWB) 35°CDB (95°FDB) 5 m (16-3/8 ft) 0 m (0 ft)	*3 Nominal heating condition 20°CDB (68°FDB) 7°CDB/6°CWB (45°FDB/43°FWB) 7.5 m (24-9/16 ft) 0 m (0 ft)	Unit converter kcal = kW x 860 Btu/h = kW x 3,412 cfm = m <sup>3</sup> /min x 35.31 lb = kg / 0.4536
*1 Nominal cooling condition Indoor : 27°CDB/19°CWB (81°FDB/66°FWB) Outdoor : 35°CDB (95°FDB) Pipe length : 7.5 m (24-9/16 ft) Level difference : 0 m (0 ft)	*2 Nominal cooling condition 27°CDB/19.5°CWB (81°FDB/67°FWB) 35°CDB (95°FDB) 5 m (16-3/8 ft) 0 m (0 ft)	*3 Nominal heating condition 20°CDB (68°FDB) 7°CDB/6°CWB (45°FDB/43°FWB) 7.5 m (24-9/16 ft) 0 m (0 ft)	Unit converter kcal = kW x 860 Btu/h = kW x 3,412 cfm = m <sup>3</sup> /min x 35.31 lb = kg / 0.4536							
* Nominal conditions *1, *3 are subject to JIS B8615-1. * Due to continuing improvement, above specification may be subject to change without notice.										

Ref.: Spec\_PLFY-P-VCM-E

# 1. SPECIFICATIONS

Model			PLFY-P32VAM-E	PLFY-P40VAM-E	PLFY-P50VAM-E	PLFY-P63VAM-E	
Power source			1-phase 220-240V 50Hz, 1-phase 220V 60Hz				
Cooling capacity (Nominal)	*1	kW	3.6	4.5	5.6	7.1	
		kcal / h	3,100	3,900	4,800	6,100	
		Btu / h	12,300	15,400	19,100	24,200	
	*2	kcal / h	3,150	4,000	5,000	6,300	
		Power input kW	0.12	0.14	0.14	0.16	
Current input A		0.59	0.68	0.68	0.78		
Heating capacity (Nominal)	*3	kW	4.0	5.0	6.3	8.0	
		kcal / h	3,400	4,300	5,400	6,900	
		Btu / h	13,600	17,100	21,500	27,300	
	Power input kW	0.12	0.14	0.14	0.16		
		Current input A		0.59	0.68	0.68	0.78
External finish			Galvanized steel sheet, with grey insulation sheet.				
External dimension H x W x D		mm	258 x 840 x 840				
		in.	10-3/16" x 33-1/8" x 33-1/8"				
Net weight		kg (lb)	22 (49)	22 (49)	22 (49)	24 (53)	
Decoration panel	Model		PLP-6AA	PLP-6AA	PLP-6AA	PLP-6AA	
	External finish		MUNSELL (0.70Y 8.59/0.97)				
	Dimension	mm	30 x 950 x 950				
		in.	1-3/16" x 37-7/16" x 37-7/16"				
	Net weight		kg (lb) 5 (12)				
Heat exchanger			Cross fin (Aluminum fin and copper tube)				
FAN	Type x Quantity		Turbo fan x 1	Turbo fan x 1	Turbo fan x 1	Turbo fan x 1	
	External static press.	Pa	0	0	0	0	
		mmH <sub>2</sub> O	0	0	0	0	
	Motor type		1-phase induction motor				
	Motor output kW		0.070	0.070	0.070	0.070	
	Driving mechanism		Direct-driven by motor				
	Airflow rate (Low-Mid-High)	m <sup>3</sup> / min	11 - 12 - 13 - 14	12 - 13 - 14 - 16	12 - 13 - 14 - 16	14 - 15 - 16 - 18	
L / s		183 - 200 - 217 - 233	200 - 217 - 233 - 267	200 - 217 - 233 - 267	233 - 250 - 267 - 300		
cfm		388 - 424 - 459 - 494	424 - 459 - 494 - 565	424 - 459 - 494 - 565	494 - 530 - 565 - 636		
Noise level (Low-Mid-High) (measured in anechoic room)		dB <A> 27 - 28 - 29 - 31		27 - 28 - 30 - 32		27 - 28 - 30 - 32	
Insulation material			Polyester sheet				
Air filter			PP honeycomb				
Protection device			Fuse				
Refrigerant control device			LEV				
Connectable outdoor unit			R410A, R407C, R22 CITY MULTI				
Diameter of refrigerant pipe	Liquid (R410A) (R22, R407C)	mm (in.)	ø6.35 (ø1/4") Flare	ø6.35 (ø1/4") Flare	ø6.35 (ø1/4") Flare	ø9.52 (ø3/8") Flare	
		mm (in.)	ø6.35 (ø1/4") Flare	ø6.35 (ø1/4") Flare	ø6.35 (ø1/4") Flare	ø9.52 (ø3/8") Flare	
	Gas (R410A) (R22, R407C)	mm (in.)	ø12.7 (ø1/2") Flare	ø12.7 (ø1/2") Flare	ø12.7 (ø1/2") Flare	ø15.88 (ø5/8") Flare	
Diameter of drain pipe		mm (in.)	O.D. ø32 (VP-25)				
Drawing	External		IU-RG01-N638				
	Wiring		IU-RG79-A663				
	Refrigerant cycle		-				
Standard attachment	Document		Installation Manual, Instruction Book				
	Accessory						
Remark	Optional parts						
	Decoration panel **1		PLP-6AA	PLP-6AA	PLP-6AA	PLP-6AA	
	Air outlet shutter plate		PAC-SG06SP-E	PAC-SG06SP-E	PAC-SG06SP-E	PAC-SG06SP-E	
	High efficiency filter element **2		PAC-SG01KF	PAC-SG01KF	PAC-SG01KF	PAC-SG01KF	
	Multi-function casement		PAC-SG03TM-E	PAC-SG03TM-E	PAC-SG03TM-E	PAC-SG03TM-E	
Installation		**1.PLFY-P-VAM-E should use together with PLP-6AA. **2.PAC-SG03TM-E is necessary to use with filter PAC-SG01KF.					
Installation		Details on foundation work, duct work, insulation work, electrical wiring, power source switch, and other items shall be referred to the Installation Manual.					

<b>Note :</b>	*1 Nominal cooling conditions	*2 Nominal cooling conditions	*3 Nominal heating conditions	Unit converter
	Indoor : 27°CDB/19°CWB (81°FDB/66°FWB)	27°CDB/19.5°CWB (81°FDB/67°FWB)	20°CDB (68°FDB)	kcal/h = kW x 860
	Outdoor : 35°CDB (95°FDB)	35°CDB (95°FDB)	7°CDB/6°CWB (45°FDB/43°FWB)	Btu/h = kW x 3,412
	Pipe length : 7.5 m (24-9/16 ft)	5 m (16-3/8 ft)	7.5 m (24-9/16 ft)	cfm = m <sup>3</sup> /min x 35.31
Level difference : 0 m (0 ft)	0 m (0 ft)	0 m (0 ft)	lb = kg / 0.4536	
* Nominal conditions *1, *3 are subject to JIS B8615-1.				*Above specification data is subject to rounding variation.
* Due to continuing improvement, above specification may be subject to change without notice.				

# 1. SPECIFICATIONS

R410A Data G2

Model		PLFY-P80VAM-E	PLFY-P100VAM-E	PLFY-P125VAM-E		
Power source		1-phase 220-240V 50Hz, 1-phase 220V 60Hz				
Cooling capacity (Nominal)	*1	kW	9.0	11.2	14.0	
	*1	kcal / h	7,700	9,600	12,000	
	*1	Btu / h	30,700	38,200	47,800	
	*2	kcal / h	8,000	10,000	12,500	
		Power input	kW	0.18	0.30	0.34
		Current input	A	0.86	1.43	1.64
Heating capacity (Nominal )	*3	kW	10.0	12.5	16.0	
	*3	kcal / h	8,600	10,800	13,800	
	*3	Btu / h	34,100	42,700	54,600	
		Power input	kW	0.18	0.30	0.34
			Current input	A	0.86	1.43
External finish		Galvanized steel sheet, with grey insulation sheet.				
External dimension H x W x D		mm	258 x 840 x 840	298 x 840 x 840		
		in.	10-3/16" x 33-1/8" x 33-1/8"	11-3/4" x 33-1/8" x 33-1/8"		
Net weight		kg (lb)	24 (53)	32 (71)	32 (71)	
Decoration panel	Model	PLP-6AA	PLP-6AA	PLP-6AA		
	External finish	MUNSELL (0.70Y 8.59/0.97)				
	Dimension	30 x 950 x 950				
	H x W x D	1-3/16" x 37-7/16" x 37-7/16"				
	Net weight	5 (12)				
Heat exchanger		Cross fin (Aluminum fin and copper tube)				
FAN	Type x Quantity		Turbo fan x 1	Turbo fan x 1	Turbo fan x 1	
	External static press.	Pa	0	0	0	
		mmH <sub>2</sub> O	0	0	0	
	Motor type		1-phase induction motor			
	Motor output		kW	0.070	0.120	0.120
	Driving mechanism		Direct-driven by motor			
	Airflow rate (Low-Mid-High)	m <sup>3</sup> / min	16 - 18 - 20 - 22	19 - 22 - 25 - 27	21 - 24 - 27 - 29	
		L / s	267 - 300 - 333 - 367	317 - 367 - 417 - 450	350 - 400 - 450 - 483	
cfm		565 - 636 - 706 - 777	671 - 777 - 883 - 953	742 - 848 - 953 - 1024		
Noise level (Low-Mid-High) (measured in anechoic room)		dB <A>		30 - 32 - 35 - 37	33 - 36 - 39 - 41	35 - 38 - 41 - 43
Insulation material		Polyester sheet				
Air filter		PP honeycomb				
Protection device		Fuse				
Refrigerant control device		LEV				
Connectable outdoor unit		R410A, R407C, R22 CITY MULTI				
Diameter of refrigerant pipe	Liquid (R410A) (R22, R407C)	mm (in.)	ø9.52 (ø3/8") Flare	ø9.52 (ø3/8") Flare	ø9.52 (ø3/8") Flare	
			ø9.52 (ø3/8") Flare	ø9.52 (ø3/8") Flare	ø9.52 (ø3/8") Flare	
	Gas (R410A) (R22, R407C)	mm (in.)	ø15.88 (ø5/8") Flare	ø15.88 (ø5/8") Flare	ø15.88 (ø5/8") Flare	
			ø19.05 (ø3/4") Flare	ø19.05 (ø3/4") Flare		
Diameter of drain pipe		mm (in.) O.D. ø32 (VP-25)				
Drawing	External		IU-RG01-N638			
	Wiring		IU-RG79-A663			
	Refrigerant cycle		-			
Standard attachment	Document		Installation Manual, Instruction Book			
	Accessory					
Remark	Optional parts					
	Decoration panel **1		PLP-6AA	PLP-6AA	PLP-6AA	
	Air outlet shutter plate		PAC-SG06SP-E	PAC-SG06SP-E	PAC-SG06SP-E	
	High efficiency filter element **2		PAC-SG01KF	PAC-SG01KF	PAC-SG01KF	
	Multi-function casement		PAC-SG03TM-E	PAC-SG03TM-E	PAC-SG03TM-E	
		**1.PLFY-P-VAM-E should use together with PLP-6AA. **2.PAC-SG03TM-E is necessary to use with filter PAC-SG01KF.				
Installation		Details on foundation work, duct work, insulation work, electrical wiring, power source switch, and other items shall be referred to the Installation Manual.				

Note :	*:1 Nominal cooling conditions	*:2 Nominal cooling conditions	*:3 Nominal heating conditions	Unit converter
	Indoor : 27°CDB/19°CWB (81°FDB/66°FWB)	27°CDB/19.5°CWB (81°FDB/67°FWB)	20°CDB (68°FDB)	kcal/h = kW x 860
	Outdoor : 35°CDB (95°FDB)	35°CDB (95°FDB)	7°CDB/6°CWB (45°FDB/43°FWB)	Btu/h = kW x 3,412
	Pipe length : 7.5 m (24-9/16 ft)	5 m (16-3/8 ft)	7.5 m (24-9/16 ft)	cfm = m <sup>3</sup> /min x 35.31
	Level difference : 0 m (0 ft)	0 m (0 ft)	0 m (0 ft)	lb = kg / 0.4536
* Nominal conditions *:1, *:3 are subject to JIS B8615-1.				*Above specification data is subject to rounding variation.
* Due to continuing improvement, above specification may be subject to change without notice.				

Ref.: Spec\_PLFY-P-VAM-E\_2

## 2. CAPACITY TABLES

R410A Data G2

### 2-1a. Cooling capacity in combination with PUHY,PUY,PURY-P200,250YGM

PLFY-P-VCM-E

CA : Capacity(kW) SHC : Sensible Heat Capacity(kW)

Model size (Rated kW)	Outdoor air temp.		Indoor air temp.													
			71°FDB / 59°FWB		73°FDB / 61°FWB		77°FDB / 64°FWB		81°FDB / 66°FWB		82°FDB / 68°FWB		86°FDB / 72°FWB		90°FDB / 75°FWB	
	°FDB	°CDB	21.5°CDB / 15°CWB		23°CDB / 16°CWB		25°CDB / 18°CWB		27°CDB / 19°CWB		28°CDB / 20°CWB		30°CDB / 22°CWB		32°CDB / 24°CWB	
		CA	SHC	CA	SHC	CA	SHC	CA	SHC	CA	SHC	CA	SHC	CA	SHC	
20 (2.2)	68	20.0	2.1	1.8	2.2	1.9	2.3	1.8	2.4	1.9	2.5	2.0	2.6	1.9	2.8	1.9
	73	22.5	2.1	1.8	2.2	1.9	2.3	1.8	2.4	1.9	2.5	2.0	2.6	1.9	2.8	1.9
	77	25.0	2.1	1.8	2.2	1.9	2.3	1.8	2.4	1.9	2.4	1.9	2.6	1.9	2.7	1.9
	82	27.5	2.1	1.8	2.1	1.8	2.3	1.8	2.3	1.9	2.4	1.9	2.5	1.9	2.7	1.9
	86	30.0	2.0	1.8	2.1	1.8	2.2	1.8	2.3	1.8	2.3	1.9	2.5	1.9	2.6	1.9
	91	32.5	2.0	1.7	2.1	1.8	2.2	1.8	2.2	1.8	2.3	1.9	2.4	1.9	2.6	1.8
	95	35.0	2.0	1.7	2.0	1.8	2.1	1.8	2.2	1.8	2.3	1.9	2.4	1.9	2.5	1.8
	100	37.5	1.9	1.7	2.0	1.8	2.1	1.8	2.1	1.8	2.2	1.9	2.3	1.8	2.5	1.8
	104	40.0	1.9	1.7	1.9	1.8	2.1	1.7	2.1	1.8	2.2	1.9	2.3	1.8	2.4	1.8
110	43.0	1.8	1.7	1.9	1.7	2.0	1.7	2.0	1.8	2.1	1.8	2.2	1.8	2.4	1.8	
25 (2.8)	68	20.0	2.7	2.1	2.8	2.2	2.9	2.2	3.0	2.2	3.1	2.3	3.3	2.3	3.5	2.3
	73	22.5	2.7	2.1	2.8	2.2	2.9	2.2	3.0	2.2	3.1	2.3	3.3	2.3	3.5	2.3
	77	25.0	2.7	2.1	2.8	2.2	2.9	2.2	3.0	2.2	3.1	2.3	3.3	2.3	3.5	2.3
	82	27.5	2.6	2.1	2.7	2.2	2.9	2.2	3.0	2.2	3.1	2.3	3.2	2.3	3.4	2.2
	86	30.0	2.6	2.1	2.7	2.2	2.8	2.2	2.9	2.2	3.0	2.3	3.1	2.2	3.3	2.2
	91	32.5	2.5	2.1	2.6	2.2	2.8	2.1	2.8	2.2	2.9	2.3	3.1	2.2	3.3	2.2
	95	35.0	2.5	2.1	2.6	2.1	2.7	2.1	2.8	2.1	2.9	2.2	3.0	2.2	3.2	2.2
	100	37.5	2.5	2.0	2.5	2.1	2.7	2.1	2.7	2.1	2.8	2.2	3.0	2.2	3.1	2.1
	104	40.0	2.4	2.0	2.5	2.1	2.6	2.1	2.7	2.1	2.8	2.2	2.9	2.1	3.1	2.1
110	43.0	2.4	2.0	2.4	2.1	2.6	2.0	2.6	2.1	2.7	2.2	2.8	2.1	3.0	2.1	
32 (3.6)	68	20.0	3.4	2.6	3.5	2.7	3.8	2.7	3.9	2.7	4.0	2.8	4.2	2.8	4.6	2.8
	73	22.5	3.4	2.6	3.5	2.7	3.8	2.7	3.9	2.7	4.0	2.8	4.2	2.8	4.6	2.8
	77	25.0	3.4	2.6	3.5	2.7	3.8	2.7	3.9	2.7	4.0	2.8	4.2	2.8	4.5	2.7
	82	27.5	3.4	2.6	3.5	2.7	3.7	2.6	3.8	2.7	3.9	2.8	4.1	2.7	4.4	2.7
	86	30.0	3.3	2.6	3.4	2.6	3.6	2.6	3.7	2.7	3.8	2.7	4.0	2.7	4.3	2.7
	91	32.5	3.3	2.5	3.4	2.6	3.6	2.6	3.7	2.6	3.8	2.7	4.0	2.7	4.2	2.6
	95	35.0	3.2	2.5	3.3	2.6	3.5	2.6	3.6	2.6	3.7	2.7	3.9	2.6	4.1	2.6
	100	37.5	3.2	2.5	3.2	2.6	3.4	2.5	3.5	2.6	3.6	2.7	3.8	2.6	4.0	2.6
	104	40.0	3.1	2.5	3.2	2.5	3.4	2.5	3.5	2.5	3.6	2.6	3.7	2.6	4.0	2.6
110	43.0	3.0	2.4	3.1	2.5	3.3	2.5	3.3	2.5	3.5	2.6	3.6	2.6	3.9	2.5	
40 (4.5)	68	20.0	4.3	3.0	4.4	3.1	4.7	3.1	4.9	3.1	5.0	3.3	5.3	3.2	5.7	3.2
	73	22.5	4.3	3.0	4.4	3.1	4.7	3.1	4.9	3.1	5.0	3.3	5.3	3.2	5.7	3.2
	77	25.0	4.3	3.0	4.4	3.1	4.7	3.1	4.9	3.1	5.0	3.2	5.3	3.2	5.6	3.1
	82	27.5	4.3	3.0	4.4	3.1	4.6	3.1	4.8	3.1	4.9	3.2	5.2	3.2	5.5	3.1
	86	30.0	4.2	3.0	4.3	3.1	4.6	3.0	4.7	3.1	4.8	3.2	5.0	3.1	5.4	3.1
	91	32.5	4.1	3.0	4.2	3.0	4.5	3.0	4.6	3.0	4.7	3.1	5.0	3.1	5.3	3.0
	95	35.0	4.0	2.9	4.1	3.0	4.4	3.0	4.5	3.0	4.6	3.1	4.9	3.0	5.2	3.0
	100	37.5	3.9	2.9	4.1	3.0	4.3	2.9	4.4	2.9	4.5	3.1	4.8	3.0	5.0	2.9
	104	40.0	3.9	2.8	4.0	2.9	4.2	2.9	4.3	2.9	4.5	3.0	4.7	3.0	5.0	2.9
110	43.0	3.8	2.8	3.9	2.9	4.1	2.8	4.2	2.9	4.3	3.0	4.5	2.9	4.8	2.9	

kcal/h = kW x 860, Btu/h = kW x 3,412



## 2. CAPACITY TABLES

### 2-1b. Heating capacity in combination with PUHY,PUY,PURY-P200,250YGM

PLFY-P-VCM-E

SHC : Sensible Heat Capacity(kW)

Model size (Rated kW)	Outdoor air temp.		Indoor air temp.			
			59 °FDB	68 °FDB	77 °FDB	81 °FDB
	°FWB	°CWB	15.0°CDB	20.0°CDB	25.0°CDB	27.0°CDB
20 (2.2)	-4	-20.0	1.3	1.3	1.3	1.3
	5	-15.0	1.6	1.5	1.5	1.5
	14	-10.0	1.8	1.8	1.8	1.7
	23	-5.0	2.1	2.1	2.0	1.8
	32	0.0	2.4	2.4	2.0	1.8
	37	2.5	2.5	2.5	2.0	1.8
	43	6.0	2.6	2.5	2.0	1.8
	46	7.5	2.7	2.5	2.0	1.8
	50	10.0	2.9	2.5	2.0	1.8
	55	12.5	3.0	2.5	2.0	1.8
	60	15.5	3.2	2.5	2.0	1.8
25 (2.8)	-4	-20.0	1.6	1.6	1.6	1.6
	5	-15.0	2.0	2.0	1.9	1.9
	14	-10.0	2.3	2.3	2.2	2.2
	23	-5.0	2.7	2.7	2.6	2.2
	32	0.0	3.0	3.0	2.6	2.2
	37	2.5	3.2	3.2	2.6	2.2
	43	6.0	3.3	3.2	2.6	2.2
	46	7.5	3.4	3.2	2.6	2.2
	50	10.0	3.6	3.2	2.6	2.2
	55	12.5	3.9	3.2	2.6	2.2
	60	15.5	4.1	3.2	2.6	2.2
32 (3.6)	-4	-20.0	2.1	2.0	2.0	2.0
	5	-15.0	2.5	2.4	2.4	2.4
	14	-10.0	2.9	2.9	2.8	2.7
	23	-5.0	3.4	3.3	3.2	2.8
	32	0.0	3.8	3.8	3.2	2.8
	37	2.5	4.0	4.0	3.2	2.8
	43	6.0	4.2	4.0	3.2	2.8
	46	7.5	4.3	4.0	3.2	2.8
	50	10.0	4.6	4.0	3.2	2.8
	55	12.5	4.8	4.0	3.2	2.8
	60	15.5	5.1	4.0	3.2	2.8
40 (4.5)	-4	-20.0	2.6	2.5	2.5	2.5
	5	-15.0	3.1	3.1	3.0	3.0
	14	-10.0	3.7	3.6	3.5	3.4
	23	-5.0	4.2	4.2	4.0	3.5
	32	0.0	4.7	4.7	4.0	3.5
	37	2.5	5.0	5.0	4.0	3.5
	43	6.0	5.2	5.0	4.0	3.5
	46	7.5	5.4	5.0	4.0	3.5
	50	10.0	5.7	5.0	4.0	3.5
	55	12.5	6.0	5.0	4.0	3.5
	60	15.5	6.4	5.0	4.0	3.5

A  
B  
C  
D  
E  
F  
G  
H  
I  
J  
V<sub>a</sub>  
V<sub>b</sub>  
BC

## 2. CAPACITY TABLES

R410A Data G2

### 2-1b. Heating capacity in combination with PUHY,PUY,PURY-P200,250YGM

#### PLFY-P-VAM-E

SHC : Sensible Heat Capacity(kW)

Model size (Rated kW)	Outdoor air temp.		Indoor air temp.			
			59 °FDB	68 °FDB	77 °FDB	81 °FDB
			15.0°CDB	20.0°CDB	25.0°CDB	27.0°CDB
	°FWB	°CWB	SHC	SHC	SHC	SHC
32 (3.6)	-4	-20.0	2.1	2.0	2.0	2.0
	5	-15.0	2.5	2.4	2.4	2.4
	14	-10.0	2.9	2.9	2.8	2.7
	23	-5.0	3.4	3.3	3.2	2.8
	32	0.0	3.8	3.8	3.2	2.8
	37	2.5	4.0	4.0	3.2	2.8
	43	6.0	4.2	4.0	3.2	2.8
	46	7.5	4.3	4.0	3.2	2.8
	50	10.0	4.6	4.0	3.2	2.8
	55	12.5	4.8	4.0	3.2	2.8
60	15.5	5.1	4.0	3.2	2.8	
40 (4.5)	-4	-20.0	2.6	2.5	2.5	2.5
	5	-15.0	3.1	3.1	3.0	3.0
	14	-10.0	3.7	3.6	3.5	3.4
	23	-5.0	4.2	4.2	4.0	3.5
	32	0.0	4.7	4.7	4.0	3.5
	37	2.5	5.0	5.0	4.0	3.5
	43	6.0	5.2	5.0	4.0	3.5
	46	7.5	5.4	5.0	4.0	3.5
	50	10.0	5.7	5.0	4.0	3.5
	55	12.5	6.0	5.0	4.0	3.5
60	15.5	6.4	5.0	4.0	3.5	
50 (5.6)	-4	-20.0	3.2	3.2	3.2	3.2
	5	-15.0	3.9	3.8	3.8	3.7
	14	-10.0	4.6	4.5	4.4	4.3
	23	-5.0	5.3	5.2	5.0	4.4
	32	0.0	6.0	5.9	5.0	4.4
	37	2.5	6.3	6.2	5.0	4.4
	43	6.0	6.6	6.3	5.0	4.4
	46	7.5	6.8	6.3	5.0	4.4
	50	10.0	7.2	6.3	5.0	4.4
	55	12.5	7.6	6.3	5.0	4.4
60	15.5	8.1	6.3	5.0	4.4	
63 (7.1)	-4	-20.0	4.1	4.0	4.0	4.0
	5	-15.0	5.0	4.9	4.8	4.7
	14	-10.0	5.8	5.8	5.6	5.5
	23	-5.0	6.7	6.6	6.4	5.6
	32	0.0	7.6	7.5	6.4	5.6
	37	2.5	8.0	7.9	6.4	5.6
	43	6.0	8.3	8.0	6.4	5.6
	46	7.5	8.6	8.0	6.4	5.6
	50	10.0	9.1	8.0	6.4	5.6
	55	12.5	9.6	8.0	6.4	5.6
60	15.5	10.2	8.0	6.4	5.6	

Model size (Rated kW)	Outdoor air temp.		Indoor air temp.			
			59 °FDB	68 °FDB	77 °FDB	81 °FDB
			15.0°CDB	20.0°CDB	25.0°CDB	27.0°CDB
	°FWB	°CWB	SHC	SHC	SHC	SHC
80 (9.0)	-4	-20.0	5.2	5.0	5.0	5.0
	5	-15.0	6.2	6.1	6.0	5.9
	14	-10.0	7.3	7.2	7.0	6.9
	23	-5.0	8.4	8.3	8.0	7.0
	32	0.0	9.5	9.4	8.0	7.0
	37	2.5	10.0	9.9	8.0	7.0
	43	6.0	10.4	10.0	8.0	7.0
	46	7.5	10.8	10.0	8.0	7.0
	50	10.0	11.4	10.0	8.0	7.0
	55	12.5	12.1	10.0	8.0	7.0
60	15.5	12.8	10.0	8.0	7.0	
100 (11.2)	-4	-20.0	6.4	6.3	6.3	6.3
	5	-15.0	7.8	7.6	7.5	7.4
	14	-10.0	9.1	9.0	8.8	8.6
	23	-5.0	10.5	10.4	10.0	8.8
	32	0.0	11.8	11.8	10.0	8.8
	37	2.5	12.5	12.4	10.0	8.8
	43	6.0	13.0	12.5	10.0	8.8
	46	7.5	13.4	12.5	10.0	8.8
	50	10.0	14.3	12.5	10.0	8.8
	55	12.5	15.1	12.5	10.0	8.8
60	15.5	16.0	12.5	10.0	8.8	
125 (14.0)	-4	-20.0	8.2	8.0	8.0	8.0
	5	-15.0	9.9	9.8	9.6	9.4
	14	-10.0	11.7	11.5	11.2	11.0
	23	-5.0	13.4	13.3	12.8	11.2
	32	0.0	15.1	15.0	12.8	11.2
	37	2.5	16.0	15.8	12.8	11.2
	43	6.0	16.6	16.0	12.8	11.2
	46	7.5	17.2	16.0	12.8	11.2
	50	10.0	18.2	16.0	12.8	11.2
	55	12.5	19.3	16.0	12.8	11.2
60	15.5	20.5	16.0	12.8	11.2	

kcal/h = kW x 860, Btu/h = kW x 3,412



## 2. CAPACITY TABLES

R410A Data G2

### 2-2a. Cooling capacity in combination with PUHY,PUY,PURY-P300,350YGM / PUHY,PURY-P400YGM

PLFY-P-VCM-E

CA : Capacity(kW) SHC : Sensible Heat Capacity(kW)

Model size (Rated kW)	Outdoor air temp.		Indoor air temp.													
			71°FDB / 59°FWB		73°FDB / 61°FWB		77°FDB / 64°FWB		81°FDB / 66°FWB		82°FDB / 68°FWB		86°FDB / 72°FWB		90°FDB / 75°FWB	
	°FDB	°CDB	21.5°CDB / 15°CWB		23°CDB / 16°CWB		25°CDB / 18°CWB		27°CDB / 19°CWB		28°CDB / 20°CWB		30°CDB / 22°CWB		32°CDB / 24°CWB	
			CA	SHC	CA	SHC	CA	SHC	CA	SHC	CA	SHC	CA	SHC	CA	SHC
20 (2.2)	68	20.0	2.1	1.8	2.2	1.9	2.4	1.9	2.5	1.9	2.5	2.0	2.7	2.0	2.9	1.9
	73	22.5	2.1	1.8	2.2	1.9	2.3	1.9	2.4	1.9	2.5	2.0	2.6	1.9	2.8	1.9
	77	25.0	2.1	1.8	2.2	1.8	2.3	1.8	2.4	1.9	2.4	2.0	2.6	1.9	2.8	1.9
	82	27.5	2.1	1.8	2.1	1.8	2.3	1.8	2.3	1.9	2.4	1.9	2.5	1.9	2.7	1.9
	86	30.0	2.0	1.8	2.1	1.8	2.2	1.8	2.3	1.8	2.4	1.9	2.5	1.9	2.6	1.9
	91	32.5	2.0	1.7	2.0	1.8	2.2	1.8	2.2	1.8	2.3	1.9	2.4	1.9	2.6	1.9
	95	35.0	2.0	1.7	2.0	1.8	2.1	1.8	2.2	1.8	2.3	1.9	2.4	1.9	2.5	1.8
	100	37.5	1.9	1.7	1.9	1.8	2.1	1.7	2.1	1.8	2.2	1.9	2.4	1.8	2.5	1.8
	104	40.0	1.9	1.7	1.9	1.7	2.0	1.7	2.1	1.8	2.4	1.9	2.3	1.8	2.4	1.8
110	43.0	1.8	1.7	1.8	1.7	2.0	1.7	2.0	1.8	2.1	1.8	2.2	1.8	2.4	1.8	
25 (2.8)	68	20.0	2.7	2.2	2.8	2.2	3.0	2.2	3.1	2.3	3.2	2.4	3.4	2.3	3.6	2.3
	73	22.5	2.7	2.2	2.8	2.2	3.0	2.2	3.1	2.3	3.2	2.4	3.4	2.3	3.6	2.3
	77	25.0	2.7	2.1	2.7	2.2	2.9	2.2	3.0	2.2	3.1	2.3	3.3	2.3	3.5	2.3
	82	27.5	2.6	2.1	2.7	2.2	2.9	2.2	3.0	2.2	3.1	2.3	3.2	2.3	3.4	2.2
	86	30.0	2.6	2.1	2.6	2.2	2.8	2.1	2.9	2.2	3.0	2.3	3.2	2.3	3.4	2.2
	91	32.5	2.5	2.1	2.6	2.1	2.8	2.1	2.9	2.2	2.9	2.3	3.1	2.2	3.3	2.2
	95	35.0	2.5	2.1	2.5	2.1	2.7	2.1	2.8	2.1	2.9	2.2	3.1	2.2	3.2	2.2
	100	37.5	2.5	2.0	2.5	2.1	2.6	2.1	2.7	2.1	2.8	2.2	3.0	2.2	3.2	2.2
	104	40.0	2.4	2.0	2.4	2.1	2.6	2.1	2.7	2.1	3.0	2.3	2.9	2.2	3.1	2.1
110	43.0	2.4	2.0	2.4	2.0	2.5	2.0	2.6	2.1	2.7	2.2	2.8	2.1	3.0	2.1	
32 (3.6)	68	20.0	3.5	2.6	3.6	2.7	3.9	2.7	4.0	2.8	4.2	2.9	4.4	2.8	4.7	2.8
	73	22.5	3.5	2.6	3.6	2.7	3.8	2.7	4.0	2.7	4.1	2.9	4.3	2.8	4.6	2.8
	77	25.0	3.4	2.6	3.5	2.7	3.8	2.7	3.9	2.7	4.0	2.8	4.2	2.8	4.5	2.7
	82	27.5	3.4	2.6	3.5	2.7	3.7	2.6	3.8	2.7	3.9	2.8	4.2	2.8	4.4	2.7
	86	30.0	3.3	2.6	3.4	2.6	3.6	2.6	3.7	2.7	3.9	2.8	4.1	2.7	4.3	2.7
	91	32.5	3.3	2.5	3.3	2.6	3.5	2.6	3.7	2.6	3.8	2.7	4.0	2.7	4.2	2.6
	95	35.0	3.2	2.5	3.3	2.6	3.5	2.5	3.6	2.6	3.7	2.7	3.9	2.7	4.2	2.6
	100	37.5	3.2	2.5	3.2	2.5	3.4	2.5	3.5	2.6	3.6	2.7	3.9	2.6	4.1	2.6
	104	40.0	3.1	2.5	3.1	2.5	3.3	2.5	3.4	2.5	3.9	2.8	3.8	2.6	4.0	2.6
110	43.0	3.0	2.4	3.0	2.5	3.2	2.4	3.3	2.5	3.4	2.6	3.7	2.6	3.9	2.5	
40 (4.5)	68	20.0	4.4	3.1	4.5	3.2	4.9	3.2	5.0	3.2	5.2	3.3	5.5	3.3	5.9	3.3
	73	22.5	4.3	3.1	4.5	3.2	4.8	3.2	5.0	3.2	5.1	3.3	5.4	3.3	5.7	3.2
	77	25.0	4.3	3.1	4.4	3.1	4.7	3.1	4.9	3.1	5.0	3.3	5.3	3.2	5.6	3.2
	82	27.5	4.2	3.0	4.3	3.1	4.6	3.1	4.8	3.1	4.9	3.2	5.2	3.2	5.5	3.1
	86	30.0	4.1	3.0	4.2	3.0	4.5	3.0	4.7	3.1	4.8	3.2	5.1	3.1	5.4	3.1
	91	32.5	4.1	2.9	4.2	3.0	4.4	3.0	4.6	3.0	4.7	3.1	5.0	3.1	5.3	3.0
	95	35.0	4.0	2.9	4.1	3.0	4.3	2.9	4.5	3.0	4.6	3.1	4.9	3.1	5.2	3.0
	100	37.5	4.0	2.9	4.0	2.9	4.3	2.9	4.4	2.9	4.5	3.1	4.8	3.0	5.1	3.0
	104	40.0	3.9	2.9	3.9	2.9	4.2	2.9	4.3	2.9	4.9	3.2	4.7	3.0	5.0	2.9
110	43.0	3.8	2.8	3.8	2.8	4.1	2.8	4.2	2.9	4.3	3.0	4.6	2.9	4.8	2.9	

kcal/h = kW x 860, Btu/h = kW x 3,412



## 2. CAPACITY TABLES

### 2-2b. Heating capacity in combination with PUHY,PURY-P300,350,400YGM

PLFY-P-VCM-E

SHC : Sensible Heat Capacity(kW)

Model size (Rated kW)	Outdoor air temp.		Indoor air temp.			
			59 °FDB	68 °FDB	77 °FDB	81 °FDB
	°FWB	°CWB	15.0°CDB	20.0°CDB	25.0°CDB	27.0°CDB
20 (2.2)	-4	-20.0	1.3	1.3	1.3	1.2
	5	-15.0	1.5	1.5	1.5	1.5
	14	-10.0	1.8	1.8	1.7	1.6
	23	-5.0	2.0	2.0	1.9	1.6
	32	0.0	2.3	2.3	1.9	1.6
	37	2.5	2.4	2.4	1.9	1.6
	43	6.0	2.6	2.5	1.9	1.6
	46	7.5	2.7	2.5	1.9	1.6
	50	10.0	2.8	2.5	1.9	1.6
	55	12.5	2.9	2.5	1.9	1.6
60	15.5	2.9	2.5	1.9	1.6	
25 (2.8)	-4	-20.0	1.7	1.6	1.6	1.5
	5	-15.0	1.9	1.9	1.9	1.9
	14	-10.0	2.2	2.2	2.2	2.0
	23	-5.0	2.6	2.6	2.4	2.0
	32	0.0	2.9	2.9	2.4	2.0
	37	2.5	3.1	3.0	2.4	2.0
	43	6.0	3.3	3.2	2.4	2.0
	46	7.5	3.4	3.2	2.4	2.0
	50	10.0	3.5	3.2	2.4	2.0
	55	12.5	3.7	3.2	2.4	2.0
60	15.5	3.7	3.2	2.4	2.0	
32 (3.6)	-4	-20.0	2.1	2.0	2.0	1.9
	5	-15.0	2.4	2.4	2.4	2.3
	14	-10.0	2.8	2.8	2.7	2.6
	23	-5.0	3.2	3.2	3.0	2.6
	32	0.0	3.6	3.6	3.0	2.6
	37	2.5	3.8	3.8	3.0	2.6
	43	6.0	4.1	4.0	3.0	2.6
	46	7.5	4.2	4.0	3.0	2.6
	50	10.0	4.4	4.0	3.0	2.6
	55	12.5	4.6	4.0	3.0	2.6
60	15.5	4.6	4.0	3.0	2.6	
40 (4.5)	-4	-20.0	2.6	2.5	2.5	2.4
	5	-15.0	3.0	3.0	3.0	2.9
	14	-10.0	3.5	3.5	3.4	3.2
	23	-5.0	4.0	4.0	3.8	3.2
	32	0.0	4.5	4.5	3.8	3.2
	37	2.5	4.8	4.7	3.8	3.2
	43	6.0	5.1	5.0	3.8	3.2
	46	7.5	5.3	5.0	3.8	3.2
	50	10.0	5.5	5.0	3.8	3.2
	55	12.5	5.8	5.0	3.8	3.2
60	15.5	5.8	5.0	3.8	3.2	

A  
B  
C  
D  
E  
F  
G  
H  
I  
J  
V<sub>a</sub>  
V<sub>b</sub>  
BC

## 2. CAPACITY TABLES

R410A Data G2

### 2-2b. Heating capacity in combination with PUHY,PURY-P300,350,400YGM

#### PLFY-P-VAM-E

SHC : Sensible Heat Capacity(kW)

Model size (Rated kW)	Outdoor air temp.		Indoor air temp.			
			59 °FDB	68 °FDB	77 °FDB	81 °FDB
			15.0°CDB	20.0°CDB	25.0°CDB	27.0°CDB
	°FWB	°CWB	SHC	SHC	SHC	SHC
32 (3.6)	-4	-20.0	2.1	2.0	2.0	1.9
	5	-15.0	2.4	2.4	2.4	2.3
	14	-10.0	2.8	2.8	2.7	2.6
	23	-5.0	3.2	3.2	3.0	2.6
	32	0.0	3.6	3.6	3.0	2.6
	37	2.5	3.8	3.8	3.0	2.6
	43	6.0	4.1	4.0	3.0	2.6
	46	7.5	4.2	4.0	3.0	2.6
	50	10.0	4.4	4.0	3.0	2.6
	55	12.5	4.6	4.0	3.0	2.6
60	15.5	4.6	4.0	3.0	2.6	
40 (4.5)	-4	-20.0	2.6	2.5	2.5	2.4
	5	-15.0	3.0	3.0	3.0	2.9
	14	-10.0	3.5	3.5	3.4	3.2
	23	-5.0	4.0	4.0	3.8	3.2
	32	0.0	4.5	4.5	3.8	3.2
	37	2.5	4.8	4.7	3.8	3.2
	43	6.0	5.1	5.0	3.8	3.2
	46	7.5	5.3	5.0	3.8	3.2
	50	10.0	5.5	5.0	3.8	3.2
	55	12.5	5.8	5.0	3.8	3.2
60	15.5	5.8	5.0	3.8	3.2	
50 (5.6)	-4	-20.0	3.3	3.2	3.2	3.0
	5	-15.0	3.8	3.8	3.8	3.7
	14	-10.0	4.4	4.4	4.3	4.0
	23	-5.0	5.0	5.0	4.7	4.0
	32	0.0	5.7	5.7	4.7	4.0
	37	2.5	6.0	6.0	4.7	4.0
	43	6.0	6.5	6.3	4.7	4.0
	46	7.5	6.7	6.3	4.7	4.0
	50	10.0	7.0	6.3	4.7	4.0
	55	12.5	7.2	6.3	4.7	4.0
60	15.5	7.2	6.3	4.7	4.0	
63 (7.1)	-4	-20.0	4.2	4.0	4.0	3.8
	5	-15.0	4.8	4.8	4.8	4.6
	14	-10.0	5.6	5.6	5.5	5.1
	23	-5.0	6.4	6.4	6.0	5.1
	32	0.0	7.2	7.2	6.0	5.1
	37	2.5	7.6	7.6	6.0	5.1
	43	6.0	8.2	8.0	6.0	5.1
	46	7.5	8.5	8.0	6.0	5.1
	50	10.0	8.8	8.0	6.0	5.1
	55	12.5	9.2	8.0	6.0	5.1
60	15.5	9.2	8.0	6.0	5.1	

Model size (Rated kW)	Outdoor air temp.		Indoor air temp.			
			59 °FDB	68 °FDB	77 °FDB	81 °FDB
			15.0°CDB	20.0°CDB	25.0°CDB	27.0°CDB
	°FWB	°CWB	SHC	SHC	SHC	SHC
80 (9.0)	-4	-20.0	5.2	5.0	5.0	4.8
	5	-15.0	6.0	6.0	6.0	5.8
	14	-10.0	7.0	7.0	6.9	6.4
	23	-5.0	8.0	8.0	7.5	6.4
	32	0.0	9.0	9.0	7.5	6.4
	37	2.5	9.6	9.5	7.5	6.4
	43	6.0	10.3	10.0	7.5	6.4
	46	7.5	10.6	10.0	7.5	6.4
	50	10.0	11.1	10.0	7.5	6.4
	55	12.5	11.5	10.0	7.5	6.4
60	15.5	11.5	10.0	7.5	6.4	
100 (11.2)	-4	-20.0	6.5	6.3	6.3	6.0
	5	-15.0	7.5	7.5	7.5	7.3
	14	-10.0	8.8	8.8	8.6	8.0
	23	-5.0	10.0	10.0	9.4	8.0
	32	0.0	11.3	11.3	9.4	8.0
	37	2.5	11.9	11.8	9.4	8.0
	43	6.0	12.8	12.5	9.4	8.0
	46	7.5	13.3	12.5	9.4	8.0
	50	10.0	13.8	12.5	9.4	8.0
	55	12.5	14.4	12.5	9.4	8.0
60	15.5	14.4	12.5	9.4	8.0	
125 (14.0)	-4	-20.0	8.3	8.0	8.0	7.7
	5	-15.0	9.6	9.6	9.6	9.3
	14	-10.0	11.2	11.2	11.0	10.2
	23	-5.0	12.8	12.8	12.0	10.2
	32	0.0	14.4	14.4	12.0	10.2
	37	2.5	15.3	15.1	12.0	10.2
	43	6.0	16.4	16.0	12.0	10.2
	46	7.5	17.0	16.0	12.0	10.2
	50	10.0	17.7	16.0	12.0	10.2
	55	12.5	18.4	16.0	12.0	10.2
60	15.5	18.4	16.0	12.0	10.2	

kcal/h = kW x 860, Btu/h = kW x 3,412

## 2. CAPACITY TABLES

R410A Data G2

### 2-3a. Cooling capacity in combination with PUHY,PURY-P450,500,550,600,650YGM

PLFY-P-VCM-E

CA : Capacity(kW) SHC : Sensible Heat Capacity(kW)

Model size (Rated kW)	Outdoor air temp.		Indoor air temp.													
			71°FDB / 59°FWB 21.5°CDB / 15°CWB		73°FDB / 61°FWB 23°CDB / 16°CWB		77°FDB / 64°FWB 25°CDB / 18°CWB		81°FDB / 66°FWB 27°CDB / 19°CWB		82°FDB / 68°FWB 28°CDB / 20°CWB		86°FDB / 72°FWB 30°CDB / 22°CWB		90°FDB / 75°FWB 32°CDB / 24°CWB	
	°FDB	°CDB	CA	SHC	CA	SHC	CA	SHC	CA	SHC	CA	SHC	CA	SHC	CA	SHC
20 (2.2)	68	20.0	2.1	1.8	2.1	1.8	2.3	1.8	2.4	1.9	2.5	2.0	2.6	1.9	2.8	1.9
	73	22.5	2.1	1.8	2.1	1.8	2.3	1.8	2.3	1.9	2.4	1.9	2.6	1.9	2.7	1.9
	77	25.0	2.0	1.8	2.1	1.8	2.2	1.8	2.3	1.9	2.4	1.9	2.6	1.9	2.7	1.9
	82	27.5	2.0	1.8	2.1	1.8	2.2	1.8	2.3	1.8	2.4	1.9	2.5	1.9	2.6	1.9
	86	30.0	2.0	1.7	2.0	1.8	2.2	1.8	2.3	1.8	2.4	1.9	2.5	1.9	2.7	1.9
	91	32.5	2.0	1.7	2.0	1.8	2.2	1.8	2.2	1.8	2.3	1.9	2.5	1.9	2.6	1.9
	95	35.0	2.0	1.7	2.0	1.8	2.1	1.8	2.2	1.8	2.3	1.9	2.5	1.9	2.6	1.9
	100	37.5	1.9	1.7	2.0	1.8	2.1	1.8	2.2	1.8	2.3	1.9	2.4	1.9	2.6	1.9
	104	40.0	1.9	1.7	1.9	1.8	2.1	1.8	2.1	1.8	2.2	1.9	2.4	1.9	2.6	1.8
110	43.0	1.9	1.7	1.9	1.7	2.1	1.7	2.1	1.8	2.2	1.9	2.4	1.9	2.6	1.8	
25 (2.8)	68	20.0	2.6	2.1	2.7	2.2	2.9	2.2	3.0	2.2	3.1	2.3	3.3	2.3	3.5	2.3
	73	22.5	2.6	2.1	2.7	2.2	2.9	2.2	3.0	2.2	3.1	2.3	3.3	2.3	3.5	2.3
	77	25.0	2.6	2.1	2.7	2.2	2.9	2.2	2.9	2.2	3.1	2.3	3.2	2.3	3.5	2.2
	82	27.5	2.6	2.1	2.6	2.2	2.8	2.2	2.9	2.2	3.0	2.3	3.2	2.3	3.4	2.2
	86	30.0	2.5	2.1	2.6	2.1	2.8	2.1	2.9	2.2	3.0	2.3	3.2	2.3	3.4	2.2
	91	32.5	2.5	2.1	2.6	2.1	2.7	2.1	2.8	2.2	3.0	2.3	3.2	2.2	3.4	2.2
	95	35.0	2.5	2.1	2.5	2.1	2.7	2.1	2.8	2.1	2.9	2.2	3.1	2.2	3.3	2.2
	100	37.5	2.5	2.0	2.5	2.1	2.7	2.1	2.8	2.1	2.9	2.2	3.1	2.2	3.3	2.2
	104	40.0	2.4	2.0	2.5	2.1	2.7	2.1	2.7	2.1	2.9	2.2	3.1	2.2	3.3	2.2
110	43.0	2.4	2.0	2.5	2.1	2.6	2.1	2.7	2.1	2.8	2.2	3.0	2.2	3.2	2.2	
32 (3.6)	68	20.0	3.4	2.6	3.5	2.7	3.7	2.7	3.9	2.7	4.0	2.8	4.2	2.8	4.5	2.8
	73	22.5	3.4	2.6	3.5	2.7	3.7	2.6	3.8	2.7	4.0	2.8	4.2	2.8	4.5	2.7
	77	25.0	3.3	2.6	3.4	2.6	3.7	2.6	3.8	2.7	3.9	2.8	4.2	2.8	4.4	2.7
	82	27.5	3.3	2.6	3.4	2.6	3.6	2.6	3.7	2.7	3.9	2.8	4.1	2.7	4.3	2.7
	86	30.0	3.3	2.5	3.3	2.6	3.6	2.6	3.7	2.6	3.9	2.8	4.1	2.7	4.4	2.7
	91	32.5	3.2	2.5	3.3	2.6	3.5	2.6	3.6	2.6	3.8	2.7	4.1	2.7	4.3	2.7
	95	35.0	3.2	2.5	3.3	2.6	3.5	2.6	3.6	2.6	3.7	2.7	4.0	2.7	4.3	2.7
	100	37.5	3.2	2.5	3.2	2.5	3.5	2.5	3.5	2.6	3.7	2.7	4.0	2.7	4.2	2.6
	104	40.0	3.1	2.5	3.2	2.5	3.4	2.5	3.5	2.6	3.7	2.7	4.0	2.7	4.2	2.6
110	43.0	3.1	2.5	3.2	2.5	3.4	2.5	3.5	2.5	3.6	2.7	3.9	2.6	4.2	2.6	
40 (4.5)	68	20.0	4.3	3.0	4.4	3.1	4.7	3.1	4.8	3.1	5.0	3.3	5.3	3.2	5.7	3.2
	73	22.5	4.2	3.0	4.3	3.1	4.6	3.1	4.8	3.1	5.0	3.2	5.3	3.2	5.6	3.2
	77	25.0	4.2	3.0	4.3	3.1	4.6	3.1	4.7	3.1	4.9	3.2	5.2	3.2	5.6	3.1
	82	27.5	4.1	3.0	4.2	3.0	4.5	3.0	4.7	3.1	4.9	3.2	5.2	3.2	5.4	3.1
	86	30.0	4.1	3.0	4.2	3.0	4.5	3.0	4.6	3.0	4.8	3.2	5.1	3.1	5.4	3.1
	91	32.5	4.1	2.9	4.1	3.0	4.4	3.0	4.5	3.0	4.8	3.2	5.1	3.1	5.4	3.1
	95	35.0	4.0	2.9	4.1	3.0	4.4	3.0	4.5	3.0	4.7	3.1	5.0	3.1	5.4	3.1
	100	37.5	4.0	2.9	4.0	2.9	4.3	2.9	4.4	3.0	4.7	3.1	5.0	3.1	5.3	3.0
	104	40.0	3.9	2.9	4.0	2.9	4.3	2.9	4.4	2.9	4.6	3.1	5.0	3.1	5.3	3.0
110	43.0	3.9	2.8	3.9	2.9	4.2	2.9	4.3	2.9	4.5	3.1	4.9	3.0	5.2	3.0	

kcal/h = kW x 860, Btu/h = kW x 3,412



## 2. CAPACITY TABLES

### 2-3b. Heating capacity in combination with PUHY,PURY-P450,500,550,600,650YGM

PLFY-P-VCM-E

SHC : Sensible Heat Capacity(kW)

Model size (Rated kW)	Outdoor air temp.		Indoor air temp.			
			59 °FDB	68 °FDB	77 °FDB	81 °FDB
	°FWB	°CWB	15.0°CDB	20.0°CDB	25.0°CDB	27.0°CDB
20 (2.2)	-4	-20.0	1.3	1.3	1.3	1.3
	5	-15.0	1.6	1.5	1.5	1.5
	14	-10.0	1.8	1.8	1.7	1.7
	23	-5.0	2.1	2.0	1.9	1.8
	32	0.0	2.3	2.3	2.0	1.8
	37	2.5	2.4	2.4	2.0	1.8
	43	6.0	2.6	2.5	2.0	1.8
	46	7.5	2.7	2.5	2.0	1.8
	50	10.0	2.8	2.5	2.0	1.8
	55	12.5	2.9	2.5	2.0	1.8
60	15.5	2.9	2.5	2.0	1.8	
25 (2.8)	-4	-20.0	1.7	1.6	1.6	1.6
	5	-15.0	2.0	1.9	1.9	1.9
	14	-10.0	2.3	2.2	2.2	2.1
	23	-5.0	2.6	2.6	2.5	2.3
	32	0.0	2.9	2.9	2.5	2.3
	37	2.5	3.1	3.0	2.5	2.3
	43	6.0	3.3	3.2	2.5	2.3
	46	7.5	3.4	3.2	2.5	2.3
	50	10.0	3.6	3.2	2.5	2.3
	55	12.5	3.7	3.2	2.5	2.3
60	15.5	3.7	3.2	2.5	2.3	
32 (3.6)	-4	-20.0	2.1	2.0	2.0	2.0
	5	-15.0	2.5	2.4	2.4	2.3
	14	-10.0	2.9	2.8	2.7	2.6
	23	-5.0	3.3	3.2	3.1	2.8
	32	0.0	3.7	3.6	3.2	2.8
	37	2.5	3.8	3.8	3.2	2.8
	43	6.0	4.1	4.0	3.2	2.8
	46	7.5	4.2	4.0	3.2	2.8
	50	10.0	4.4	4.0	3.2	2.8
	55	12.5	4.6	4.0	3.2	2.8
60	15.5	4.6	4.0	3.2	2.8	
40 (4.5)	-4	-20.0	2.7	2.6	2.6	2.5
	5	-15.0	3.1	3.0	3.0	2.9
	14	-10.0	3.6	3.5	3.4	3.3
	23	-5.0	4.1	4.0	3.9	3.5
	32	0.0	4.6	4.5	4.0	3.5
	37	2.5	4.8	4.8	4.0	3.5
	43	6.0	5.2	5.0	4.0	3.5
	46	7.5	5.3	5.0	4.0	3.5
	50	10.0	5.6	5.0	4.0	3.5
	55	12.5	5.8	5.0	4.0	3.5
60	15.5	5.8	5.0	4.0	3.5	

A  
B  
C  
D  
E  
F  
G  
H  
I  
J  
V<sub>a</sub>  
V<sub>b</sub>  
BC

## 2. CAPACITY TABLES

R410A Data G2

### 2-3b. Heating capacity in combination with PUHY,PURY-P450,500,550,600,650YGM

#### PLFY-P-VAM-E

SHC : Sensible Heat Capacity(kW)

Model size (Rated kW)	Outdoor air temp.		Indoor air temp.			
			59 °FDB	68 °FDB	77 °FDB	81 °FDB
			15.0°CDB	20.0°CDB	25.0°CDB	27.0°CDB
	°FWB	°CWB	SHC	SHC	SHC	SHC
32 (3.6)	-4	-20.0	2.1	2.0	2.0	2.0
	5	-15.0	2.5	2.4	2.4	2.3
	14	-10.0	2.9	2.8	2.7	2.6
	23	-5.0	3.3	3.2	3.1	2.8
	32	0.0	3.7	3.6	3.2	2.8
	37	2.5	3.8	3.8	3.2	2.8
	43	6.0	4.1	4.0	3.2	2.8
	46	7.5	4.2	4.0	3.2	2.8
	50	10.0	4.4	4.0	3.2	2.8
	55	12.5	4.6	4.0	3.2	2.8
60	15.5	4.6	4.0	3.2	2.8	
40 (4.5)	-4	-20.0	2.7	2.6	2.6	2.5
	5	-15.0	3.1	3.0	3.0	2.9
	14	-10.0	3.6	3.5	3.4	3.3
	23	-5.0	4.1	4.0	3.9	3.5
	32	0.0	4.6	4.5	4.0	3.5
	37	2.5	4.8	4.8	4.0	3.5
	43	6.0	5.2	5.0	4.0	3.5
	46	7.5	5.3	5.0	4.0	3.5
	50	10.0	5.6	5.0	4.0	3.5
	55	12.5	5.8	5.0	4.0	3.5
60	15.5	5.8	5.0	4.0	3.5	
50 (5.6)	-4	-20.0	3.3	3.2	3.2	3.2
	5	-15.0	3.9	3.8	3.8	3.7
	14	-10.0	4.5	4.4	4.3	4.2
	23	-5.0	5.2	5.0	4.9	4.4
	32	0.0	5.8	5.7	5.0	4.4
	37	2.5	6.0	6.0	5.0	4.4
	43	6.0	6.5	6.3	5.0	4.4
	46	7.5	6.7	6.3	5.0	4.4
	50	10.0	7.0	6.3	5.0	4.4
	55	12.5	7.3	6.3	5.0	4.4
60	15.5	7.3	6.3	5.0	4.4	
63 (7.1)	-4	-20.0	4.2	4.1	4.1	4.0
	5	-15.0	5.0	4.8	4.8	4.6
	14	-10.0	5.8	5.6	5.4	5.3
	23	-5.0	6.6	6.4	6.2	5.6
	32	0.0	7.4	7.2	6.4	5.6
	37	2.5	7.7	7.6	6.4	5.6
	43	6.0	8.2	8.0	6.4	5.6
	46	7.5	8.5	8.0	6.4	5.6
	50	10.0	8.9	8.0	6.4	5.6
	55	12.5	9.3	8.0	6.4	5.6
60	15.5	9.3	8.0	6.4	5.6	

Model size (Rated kW)	Outdoor air temp.		Indoor air temp.			
			59 °FDB	68 °FDB	77 °FDB	81 °FDB
			15.0°CDB	20.0°CDB	25.0°CDB	27.0°CDB
	°FWB	°CWB	SHC	SHC	SHC	SHC
80 (9.0)	-4	-20.0	5.3	5.1	5.1	5.0
	5	-15.0	6.3	6.1	6.0	5.8
	14	-10.0	7.2	7.0	6.8	6.6
	23	-5.0	8.2	8.0	7.7	7.1
	32	0.0	9.2	9.0	8.0	7.1
	37	2.5	9.6	9.5	8.0	7.1
	43	6.0	10.3	10.0	8.0	7.1
	46	7.5	10.6	10.0	8.0	7.1
	50	10.0	11.1	10.0	8.0	7.1
	55	12.5	11.6	10.0	8.0	7.1
60	15.5	11.6	10.0	8.0	7.1	
100 (11.2)	-4	-20.0	6.6	6.4	6.4	6.3
	5	-15.0	7.8	7.6	7.5	7.3
	14	-10.0	9.0	8.8	8.5	8.3
	23	-5.0	10.3	10.0	9.6	8.8
	32	0.0	11.5	11.3	9.9	8.8
	37	2.5	12.0	11.9	9.9	8.8
	43	6.0	12.9	12.5	9.9	8.8
	46	7.5	13.3	12.5	9.9	8.8
	50	10.0	13.9	12.5	9.9	8.8
	55	12.5	14.5	12.5	9.9	8.8
60	15.5	14.5	12.5	9.9	8.8	
125 (14.0)	-4	-20.0	8.5	8.2	8.2	8.0
	5	-15.0	10.0	9.7	9.6	9.3
	14	-10.0	11.5	11.2	10.9	10.6
	23	-5.0	13.1	12.8	12.3	11.3
	32	0.0	14.7	14.4	12.7	11.3
	37	2.5	15.4	15.2	12.7	11.3
	43	6.0	16.5	16.0	12.7	11.3
	46	7.5	17.0	16.0	12.7	11.3
	50	10.0	17.8	16.0	12.7	11.3
	55	12.5	18.6	16.0	12.7	11.3
60	15.5	18.6	16.0	12.7	11.3	

kcal/h = kW x 860, Btu/h = kW x 3,412



## 2. CAPACITY TABLES

R410A Data G2

### 2-4a. Cooling capacity in combination with PQHY,PQRY-P200,250YGM, PQHY,PQRY-P400,500YSGM

PLFY-P-VCM-E

CA : Capacity(kW) SHC : Sensible Heat Capacity(kW)

Model size (Rated kW)	Water temp.		Indoor air temp.													
			71°FDB / 59°FWB 21.5°CDB / 15°CWB		73°FDB / 61°FWB 23°CDB / 16°CWB		77°FDB / 64°FWB 25°CDB / 18°CWB		81°FDB / 66°FWB 27°CDB / 19°CWB		82°FDB / 68°FWB 28°CDB / 20°CWB		86°FDB / 72°FWB 30°CDB / 22°CWB		90°FDB / 75°FWB 32°CDB / 24°CWB	
	°F	°C	CA	SHC	CA	SHC	CA	SHC	CA	SHC	CA	SHC	CA	SHC	CA	SHC
20 (2.2)	50	10.0	2.2	1.8	2.3	1.9	2.4	1.9	2.5	1.9	2.6	2.0	2.7	2.0	2.9	1.9
	68	20.0	2.1	1.8	2.1	1.8	2.3	1.8	2.4	1.9	2.4	1.9	2.6	1.9	2.7	1.9
	86	30.0	1.9	1.7	2.0	1.8	2.1	1.8	2.2	1.8	2.3	1.9	2.4	1.9	2.5	1.8
	104	40.0	1.7	1.6	1.8	1.7	1.9	1.7	2.0	1.7	2.1	1.8	2.2	1.8	2.3	1.8
	113	45.0	1.6	1.6	1.7	1.6	1.8	1.6	1.9	1.7	1.9	1.8	2.0	1.7	2.2	1.7
25 (2.8)	50	10.0	2.8	2.2	2.9	2.3	3.1	2.3	3.2	2.3	3.3	2.4	3.5	2.4	3.7	2.3
	68	20.0	2.6	2.1	2.7	2.2	2.9	2.2	3.0	2.2	3.1	2.3	3.3	2.3	3.5	2.3
	86	30.0	2.5	2.0	2.5	2.1	2.7	2.1	2.8	2.1	2.9	2.2	3.1	2.2	3.2	2.2
	104	40.0	2.2	1.9	2.3	2.0	2.5	2.0	2.5	2.0	2.6	2.1	2.8	2.1	2.9	2.1
	113	45.0	2.1	1.9	2.1	1.9	2.3	1.9	2.4	2.0	2.4	2.1	2.6	2.0	2.7	2.0
32 (3.6)	50	10.0	3.6	2.7	3.7	2.8	3.9	2.7	4.1	2.8	4.2	2.9	4.5	2.9	4.7	2.8
	68	20.0	3.4	2.6	3.5	2.7	3.7	2.7	3.9	2.7	4.0	2.8	4.2	2.8	4.5	2.7
	86	30.0	3.2	2.5	3.3	2.6	3.5	2.5	3.6	2.6	3.7	2.7	3.9	2.7	4.2	2.6
	104	40.0	2.9	2.3	3.0	2.4	3.2	2.4	3.3	2.5	3.4	2.6	3.6	2.5	3.8	2.5
	113	45.0	2.7	2.2	2.8	2.3	3.0	2.3	3.0	2.4	3.1	2.5	3.3	2.4	3.5	2.4
40 (4.5)	50	10.0	4.5	3.1	4.6	3.2	4.9	3.2	5.1	3.3	5.2	3.4	5.6	3.3	5.9	3.3
	68	20.0	4.2	3.0	4.4	3.1	4.7	3.1	4.8	3.1	5.0	3.2	5.3	3.2	5.6	3.1
	86	30.0	3.9	2.9	4.1	3.0	4.4	3.0	4.5	3.0	4.6	3.1	4.9	3.1	5.2	3.0
	104	40.0	3.6	2.7	3.7	2.8	3.9	2.8	4.1	2.8	4.2	2.9	4.5	2.9	4.7	2.8
	113	45.0	3.3	2.6	3.5	2.7	3.7	2.6	3.8	2.7	3.9	2.8	4.2	2.8	4.4	2.7

kcal/h = kW x 860, Btu/h = kW x 3,412

## 2. CAPACITY TABLES

R410A Data G2

### 2-4a. Cooling capacity in combination with PQHY,PQRY-P200,250YGM, PQHY,PQRY-P400,500YSGM

PLFY-P-VAM-E

CA : Capacity(kW) SHC : Sensible Heat Capacity(kW)

Model size (Rated kW)	Water temp.		Indoor air temp.													
			71°FDB / 59°FWB		73°FDB / 61°FWB		77°FDB / 64°FWB		81°FDB / 66°FWB		82°FDB / 68°FWB		86°FDB / 72°FWB		90°FDB / 75°FWB	
			21.5°CDB / 15°CWB		23°CDB / 16°CWB		25°CDB / 18°CWB		27°CDB / 19°CWB		28°CDB / 20°CWB		30°CDB / 22°CWB		32°CDB / 24°CWB	
	°F	°C	CA	SHC	CA	SHC	CA	SHC	CA	SHC	CA	SHC	CA	SHC	CA	SHC
32 (3.6)	50	10.0	3.6	2.9	3.7	3.0	3.9	3.0	4.1	3.0	4.2	3.1	4.5	3.1	4.7	3.0
	68	20.0	3.4	2.8	3.5	2.9	3.7	2.9	3.9	2.9	4.0	3.1	4.2	3.0	4.5	3.0
	86	30.0	3.2	2.7	3.3	2.8	3.5	2.8	3.6	2.8	3.7	2.9	3.9	2.9	4.2	2.9
	104	40.0	2.9	2.5	3.0	2.6	3.2	2.6	3.3	2.7	3.4	2.8	3.6	2.8	3.8	2.7
	113	45.0	2.7	2.5	2.8	2.6	3.0	2.5	3.0	2.6	3.1	2.7	3.3	2.7	3.5	2.7
40 (4.5)	50	10.0	4.5	3.6	4.6	3.7	4.9	3.7	5.1	3.7	5.2	3.9	5.6	3.8	5.9	3.8
	68	20.0	4.2	3.4	4.4	3.6	4.7	3.6	4.8	3.6	5.0	3.8	5.3	3.7	5.6	3.7
	86	30.0	3.9	3.3	4.1	3.4	4.4	3.4	4.5	3.5	4.6	3.6	4.9	3.6	5.2	3.5
	104	40.0	3.6	3.1	3.7	3.3	3.9	3.2	4.1	3.3	4.2	3.5	4.5	3.4	4.7	3.4
	113	45.0	3.3	3.0	3.5	3.2	3.7	3.1	3.8	3.2	3.9	3.4	4.2	3.3	4.4	3.3
50 (5.6)	50	10.0	5.5	4.1	5.7	4.3	6.1	4.2	6.3	4.3	6.5	4.5	6.9	4.4	7.3	4.3
	68	20.0	5.3	4.0	5.4	4.1	5.8	4.1	6.0	4.2	6.2	4.3	6.6	4.3	6.9	4.2
	86	30.0	4.9	3.8	5.1	3.9	5.4	3.9	5.6	4.0	5.8	4.1	6.1	4.1	6.5	4.0
	104	40.0	4.4	3.6	4.6	3.7	4.9	3.7	5.1	3.8	5.2	3.9	5.5	3.9	5.9	3.8
	113	45.0	4.2	3.5	4.3	3.6	4.6	3.6	4.7	3.6	4.9	3.8	5.2	3.7	5.5	3.7
63 (7.1)	50	10.0	7.0	5.2	7.3	5.3	7.8	5.3	8.0	5.4	8.3	5.6	8.8	5.5	9.3	5.4
	68	20.0	6.7	5.0	6.9	5.1	7.4	5.1	7.6	5.2	7.8	5.4	8.3	5.3	8.8	5.2
	86	30.0	6.2	4.8	6.4	4.9	6.9	4.9	7.1	5.0	7.3	5.2	7.8	5.1	8.2	5.0
	104	40.0	5.6	4.5	5.8	4.6	6.2	4.6	6.4	4.7	6.6	4.9	7.0	4.8	7.4	4.8
	113	45.0	5.3	4.3	5.4	4.5	5.8	4.4	6.0	4.5	6.2	4.7	6.6	4.7	6.9	4.6
80 (9.0)	50	10.0	8.9	6.4	9.2	6.6	9.9	6.6	10.2	6.7	10.5	6.9	11.1	6.8	11.8	6.7
	68	20.0	8.5	6.2	8.8	6.4	9.3	6.3	9.6	6.4	9.9	6.7	10.5	6.6	11.2	6.5
	86	30.0	7.9	5.9	8.2	6.1	8.7	6.0	9.0	6.1	9.3	6.4	9.8	6.3	10.4	6.2
	104	40.0	7.1	5.5	7.4	5.7	7.9	5.7	8.1	5.8	8.4	6.0	8.9	5.9	9.4	5.8
	113	45.0	6.7	5.3	6.9	5.5	7.4	5.5	7.6	5.6	7.9	5.8	8.3	5.7	8.8	5.6
100 (11.2)	50	10.0	11.1	7.6	11.5	7.8	12.3	7.8	12.7	7.9	13.1	8.1	13.8	8.0	14.6	7.9
	68	20.0	10.5	7.3	10.9	7.5	11.6	7.5	12.0	7.6	12.4	7.8	13.1	7.7	13.9	7.6
	86	30.0	9.8	6.9	10.2	7.1	10.9	7.1	11.2	7.2	11.5	7.4	12.2	7.3	12.9	7.2
	104	40.0	8.9	6.5	9.2	6.7	9.8	6.6	10.1	6.7	10.5	7.0	11.1	6.9	11.7	6.8
	113	45.0	8.3	6.2	8.6	6.4	9.2	6.3	9.5	6.4	9.8	6.7	10.4	6.6	11.0	6.5
125 (14.0)	50	10.0	13.9	9.5	14.4	9.7	15.3	9.7	15.8	9.8	16.3	10.1	17.3	10.0	18.3	9.8
	68	20.0	13.1	9.1	13.6	9.3	14.5	9.3	15.0	9.4	15.5	9.7	16.4	9.6	17.3	9.4
	86	30.0	12.3	8.6	12.7	8.9	13.6	8.8	14.0	8.9	14.4	9.2	15.3	9.1	16.2	8.9
	104	40.0	11.1	8.0	11.5	8.2	12.3	8.2	12.7	8.3	13.1	8.6	13.8	8.5	14.6	8.3
	113	45.0	10.4	7.6	10.7	7.9	11.5	7.8	11.8	7.9	12.2	8.2	12.9	8.1	13.7	8.0

kcal/h = kW x 860, Btu/h = kW x 3,412

## 2. CAPACITY TABLES

### 2-4b. Heating capacity in combination with PQHY,PQRY-P200,250YGM, PQHY,PQRY-P400,500YSGM

PLFY-P-VCM-E

SHC : Sensible Heat Capacity(kW)

Model size (Rated kW)	Water temp.		Indoor air temp. : °CDB				
			59 °FDB	66 °FDB	68 °FDB	77 °FDB	81 °FDB
	°F	°C	15.0°CDB	19.0°CDB	20.0°CDB	25.0°CDB	27.0°CDB
20 (2.2)	50	10	2.0	2.0	2.0	1.7	1.5
	68	20	2.5	2.5	2.5	2.1	1.9
	86	30	2.5	2.5	2.5	2.1	1.9
	104	40	2.5	2.5	2.5	2.1	1.9
	113	45	2.5	2.5	2.5	2.1	1.9
25 (2.8)	50	10	2.5	2.5	2.5	2.1	2.0
	68	20	3.2	3.2	3.2	2.7	2.5
	86	30	3.2	3.2	3.2	2.7	2.5
	104	40	3.2	3.2	3.2	2.7	2.5
	113	45	3.2	3.2	3.2	2.7	2.5
32 (3.6)	50	10	3.2	3.2	3.2	2.7	2.4
	68	20	4.0	4.0	4.0	3.4	3.1
	86	30	4.0	4.0	4.0	3.4	3.1
	104	40	4.0	4.0	4.0	3.4	3.1
	113	45	4.0	4.0	4.0	3.4	3.1
40 (4.5)	50	10	4.0	4.0	4.0	3.4	3.1
	68	20	5.0	5.0	5.0	4.2	3.9
	86	30	5.0	5.0	5.0	4.2	3.9
	104	40	5.0	5.0	5.0	4.2	3.9
	113	45	5.0	5.0	5.0	4.2	3.9

- A
- B
- C
- D
- E
- F
- G**
- H
- I
- J
- V<sub>a</sub>
- V<sub>b</sub>
- BC

## 2. CAPACITY TABLES

R410A Data G2

### 2-4b. Heating capacity in combination with PQHY,PQRY-P200,250YGM, PQHY,PQRY-P400,500YSGM

PLFY-P-VAM-E

SHC : Sensible Heat Capacity(kW)

Model size (Rated kW)	Water temp.		Indoor air temp. : °CDB				
			59 °FDB	66 °FDB	68 °FDB	77 °FDB	81 °FDB
			15.0°CDB	19.0°CDB	20.0°CDB	25.0°CDB	27.0°CDB
	°F	°C	SHC	SHC	SHC	SHC	SHC
32 (3.6)	50	10	3.2	3.2	3.2	2.7	2.4
	68	20	4.0	4.0	4.0	3.4	3.1
	86	30	4.0	4.0	4.0	3.4	3.1
	104	40	4.0	4.0	4.0	3.4	3.1
	113	45	4.0	4.0	4.0	3.4	3.1
40 (4.5)	50	10	4.0	4.0	4.0	3.4	3.1
	68	20	5.0	5.0	5.0	4.2	3.9
	86	30	5.0	5.0	5.0	4.2	3.9
	104	40	5.0	5.0	5.0	4.2	3.9
	113	45	5.0	5.0	5.0	4.2	3.9
50 (5.6)	50	10	5.0	5.0	5.0	4.2	3.9
	68	20	6.3	6.3	6.3	5.3	4.9
	86	30	6.3	6.3	6.3	5.3	4.9
	104	40	6.3	6.3	6.3	5.3	4.9
	113	45	6.3	6.3	6.3	5.3	4.9
63 (7.1)	50	10	6.3	6.3	6.3	5.4	4.9
	68	20	8.0	8.0	8.0	6.8	6.2
	86	30	8.0	8.0	8.0	6.8	6.2
	104	40	8.0	8.0	8.0	6.8	6.2
	113	45	8.0	8.0	8.0	6.8	6.2
80 (9.0)	50	10	7.9	7.9	7.9	6.7	6.1
	68	20	10.0	10.0	10.0	8.5	7.7
	86	30	10.0	10.0	10.0	8.5	7.7
	104	40	10.0	10.0	10.0	8.5	7.7
	113	45	10.0	10.0	10.0	8.5	7.7
100 (11.2)	50	10	9.9	9.9	9.9	8.4	7.7
	68	20	12.5	12.5	12.5	10.6	9.7
	86	30	12.5	12.5	12.5	10.6	9.7
	104	40	12.5	12.5	12.5	10.6	9.7
	113	45	12.5	12.5	12.5	10.6	9.7
125 (14.0)	50	10	12.7	12.7	12.7	10.7	9.8
	68	20	16.0	16.0	16.0	13.6	12.4
	86	30	16.0	16.0	16.0	13.6	12.4
	104	40	16.0	16.0	16.0	13.6	12.4
	113	45	16.0	16.0	16.0	13.6	12.4

kcal/h = kW x 860, Btu/h = kW x 3,412

## 2. CAPACITY TABLES

R410A Data G2

### 2-5a. Cooling capacity in combination with PUMY-P100,125,140YHM

PLFY-P-VCM-E

CA : Capacity(kW) SHC : Sensible Heat Capacity(kW)

Model size (Rated kW)	Outdoor air temp.		Indoor air temp.													
			71°FDB / 59°FWB		73°FDB / 61°FWB		77°FDB / 64°FWB		81°FDB / 66°FWB		82°FDB / 68°FWB		86°FDB / 72°FWB		90°FDB / 75°FWB	
	°FDB	°CDB	21.5°CDB / 15°CWB		23°CDB / 16°CWB		25°CDB / 18°CWB		27°CDB / 19°CWB		28°CDB / 20°CWB		30°CDB / 22°CWB		32°CDB / 24°CWB	
			CA	SHC	CA	SHC	CA	SHC	CA	SHC	CA	SHC	CA	SHC	CA	SHC
20 (2.2)	68	20.0	2.1	1.8	2.2	1.8	2.3	1.8	2.4	1.9	2.4	1.9	2.6	1.9	2.7	1.9
	73	22.5	2.1	1.7	2.1	1.8	2.3	1.8	2.3	1.9	2.4	1.9	2.5	1.9	2.7	1.9
	77	25.0	2.0	1.7	2.1	1.8	2.2	1.8	2.3	1.9	2.4	1.9	2.5	1.9	2.6	1.9
	82	27.5	2.0	1.7	2.1	1.7	2.2	1.8	2.3	1.9	2.3	1.9	2.5	1.9	2.6	1.9
	86	30.0	2.0	1.7	2.0	1.7	2.2	1.7	2.2	1.8	2.3	1.9	2.4	1.9	2.6	1.9
	91	32.5	1.9	1.6	2.0	1.7	2.1	1.7	2.2	1.8	2.3	1.8	2.4	1.8	2.6	1.8
	95	35.0	1.9	1.6	2.0	1.7	2.1	1.7	2.2	1.8	2.2	1.8	2.4	1.8	2.5	1.8
	100	37.5	1.9	1.6	1.9	1.6	2.1	1.7	2.1	1.8	2.2	1.8	2.4	1.8	2.5	1.8
	104	40.0	1.8	1.5	1.9	1.6	2.0	1.6	2.1	1.7	2.2	1.8	2.3	1.8	2.5	1.8
110	43.0	1.8	1.5	1.8	1.6	2.0	1.6	2.1	1.7	2.1	1.7	2.3	1.7	2.4	1.8	
25 (2.8)	68	20.0	2.7	2.1	2.7	2.2	2.9	2.2	3.0	2.3	3.1	2.3	3.2	2.3	3.4	2.3
	73	22.5	2.6	2.1	2.7	2.1	2.9	2.1	3.0	2.3	3.0	2.3	3.2	2.3	3.4	2.3
	77	25.0	2.6	2.0	2.7	2.1	2.8	2.1	2.9	2.2	3.0	2.2	3.2	2.2	3.3	2.2
	82	27.5	2.6	2.0	2.6	2.1	2.8	2.1	2.9	2.2	3.0	2.2	3.1	2.2	3.3	2.2
	86	30.0	2.5	2.0	2.6	2.0	2.8	2.1	2.9	2.2	2.9	2.2	3.1	2.2	3.3	2.2
	91	32.5	2.5	1.9	2.6	2.0	2.7	2.0	2.8	2.2	2.9	2.2	3.1	2.2	3.2	2.2
	95	35.0	2.4	1.9	2.5	2.0	2.7	2.0	2.8	2.1	2.9	2.1	3.0	2.1	3.2	2.1
	100	37.5	2.4	1.9	2.5	1.9	2.6	2.0	2.7	2.1	2.8	2.1	3.0	2.1	3.2	2.1
	104	40.0	2.3	1.8	2.4	1.9	2.6	1.9	2.7	2.1	2.8	2.1	3.0	2.1	3.2	2.1
110	43.0	2.3	1.8	2.4	1.9	2.5	1.9	2.6	2.0	2.7	2.0	2.9	2.1	3.1	2.1	
32 (3.6)	68	20.0	3.4	2.5	3.5	2.6	3.7	2.6	3.9	2.8	4.0	2.8	4.2	2.8	4.4	2.7
	73	22.5	3.4	2.5	3.5	2.6	3.7	2.6	3.8	2.7	3.9	2.7	4.1	2.7	4.3	2.7
	77	25.0	3.3	2.5	3.4	2.5	3.7	2.6	3.8	2.7	3.9	2.7	4.1	2.7	4.3	2.7
	82	27.5	3.3	2.4	3.4	2.5	3.6	2.5	3.7	2.7	3.8	2.7	4.0	2.7	4.3	2.6
	86	30.0	3.2	2.4	3.3	2.5	3.6	2.5	3.7	2.6	3.8	2.6	4.0	2.6	4.2	2.6
	91	32.5	3.2	2.4	3.3	2.4	3.5	2.5	3.6	2.6	3.7	2.6	4.0	2.6	4.2	2.6
	95	35.0	3.1	2.3	3.2	2.4	3.5	2.4	3.6	2.6	3.7	2.6	3.9	2.6	4.1	2.6
	100	37.5	3.0	2.3	3.2	2.3	3.4	2.4	3.5	2.5	3.6	2.5	3.9	2.6	4.1	2.5
	104	40.0	3.0	2.2	3.1	2.3	3.3	2.3	3.5	2.5	3.6	2.5	3.8	2.5	4.1	2.5
110	43.0	2.9	2.2	3.0	2.2	3.3	2.3	3.4	2.4	3.5	2.5	3.7	2.5	4.0	2.5	
40 (4.5)	68	20.0	4.3	2.9	4.4	3.0	4.7	3.0	4.8	3.2	5.0	3.2	5.2	3.2	5.5	3.1
	73	22.5	4.2	2.9	4.4	3.0	4.6	3.0	4.8	3.2	4.9	3.2	5.2	3.1	5.4	3.1
	77	25.0	4.2	2.8	4.3	2.9	4.6	2.9	4.7	3.1	4.8	3.1	5.1	3.1	5.4	3.0
	82	27.5	4.1	2.8	4.2	2.9	4.5	2.9	4.6	3.1	4.8	3.1	5.1	3.1	5.3	3.0
	86	30.0	4.1	2.8	4.2	2.9	4.5	2.9	4.6	3.0	4.7	3.0	5.0	3.0	5.3	3.0
	91	32.5	4.0	2.7	4.1	2.8	4.4	2.8	4.5	3.0	4.7	3.0	4.9	3.0	5.2	2.9
	95	35.0	3.9	2.7	4.0	2.8	4.3	2.8	4.5	3.0	4.6	3.0	4.9	2.9	5.2	2.9
	100	37.5	3.8	2.6	3.9	2.7	4.2	2.7	4.4	2.9	4.5	2.9	4.8	2.9	5.1	2.9
	104	40.0	3.7	2.5	3.9	2.6	4.2	2.7	4.3	2.9	4.5	2.9	4.8	2.9	5.1	2.9
110	43.0	3.6	2.5	3.8	2.6	4.1	2.6	4.2	2.8	4.4	2.8	4.7	2.8	5.0	2.8	

kcal/h = kW x 860, Btu/h = kW x 3,412



## 2. CAPACITY TABLES

### 2-5b. Heating capacity in combination with PUMY-P100,125,140YHM

PLFY-P-VCM-E

SHC : Sensible Heat Capacity(kW)

Model size (Rated kW)	Outdoor air temp.		Indoor air temp.			
			59 °FDB	68 °FDB	77 °FDB	81 °FDB
	°FWB	°CWB	15.0°CDB	20.0°CDB	25.0°CDB	27.0°CDB
20 (2.2)	-4	-20.0	1.6	1.6	1.5	1.5
	5	-15.0	1.8	1.7	1.6	1.6
	14	-10.0	1.9	1.8	1.8	1.8
	23	-5.0	2.1	2.1	2.0	2.0
	32	0.0	2.4	2.3	2.2	2.2
	37	2.5	2.5	2.4	2.3	2.3
	43	6.0	2.6	2.5	2.5	2.4
	46	7.5	2.7	2.7	2.5	2.4
	50	10.0	2.8	2.8	2.5	2.4
	55	12.5	3.0	2.9	2.5	2.4
	60	15.5	3.0	2.9	2.5	2.4
25 (2.8)	-4	-20.0	2.1	2.0	1.9	1.9
	5	-15.0	2.2	2.1	2.1	2.0
	14	-10.0	2.4	2.3	2.3	2.2
	23	-5.0	2.7	2.7	2.5	2.5
	32	0.0	3.0	2.9	2.8	2.8
	37	2.5	3.2	3.1	3.0	2.9
	43	6.0	3.3	3.2	3.2	3.1
	46	7.5	3.5	3.4	3.2	3.1
	50	10.0	3.6	3.5	3.2	3.1
	55	12.5	3.8	3.7	3.2	3.1
	60	15.5	3.9	3.7	3.2	3.1
32 (3.6)	-4	-20.0	2.6	2.5	2.4	2.4
	5	-15.0	2.8	2.7	2.6	2.6
	14	-10.0	3.0	2.9	2.8	2.8
	23	-5.0	3.4	3.3	3.2	3.1
	32	0.0	3.8	3.7	3.5	3.5
	37	2.5	4.0	3.8	3.7	3.7
	43	6.0	4.1	4.0	4.0	3.9
	46	7.5	4.3	4.2	4.0	3.9
	50	10.0	4.5	4.4	4.0	3.9
	55	12.5	4.7	4.6	4.0	3.9
	60	15.5	4.8	4.6	4.0	3.9
40 (4.5)	-4	-20.0	3.3	3.2	3.0	3.0
	5	-15.0	3.5	3.4	3.3	3.2
	14	-10.0	3.8	3.7	3.6	3.5
	23	-5.0	4.3	4.2	4.0	3.9
	32	0.0	4.7	4.6	4.4	4.4
	37	2.5	5.0	4.8	4.7	4.6
	43	6.0	5.1	5.0	5.0	4.9
	46	7.5	5.4	5.3	5.0	4.9
	50	10.0	5.7	5.5	5.0	4.9
	55	12.5	5.9	5.8	5.0	4.9
	60	15.5	6.1	5.8	5.0	4.9

A  
B  
C  
D  
E  
F  
G  
H  
I  
J  
V<sub>a</sub>  
V<sub>b</sub>  
BC

kcal/h = kW x 860, Btu/h = kW x 3,412

## 2. CAPACITY TABLES

R410A Data G2

### 2-5b. Heating capacity in combination with PUMY-P100,125,140YHM

PLFY-P-VAM-E

SHC : Sensible Heat Capacity(kW)

Model size (Rated kW)	Outdoor air temp.		Indoor air temp.			
			59 °FDB	68 °FDB	77 °FDB	81 °FDB
			15.0°CDB	20.0°CDB	25.0°CDB	27.0°CDB
	°FWB	°CWB	SHC	SHC	SHC	SHC
32 (3.6)	-4	-20.0	2.6	2.5	2.4	2.4
	5	-15.0	2.8	2.7	2.6	2.6
	14	-10.0	3.0	2.9	2.8	2.8
	23	-5.0	3.4	3.3	3.2	3.1
	32	0.0	3.8	3.7	3.5	3.5
	37	2.5	4.0	3.8	3.7	3.7
	43	6.0	4.1	4.0	4.0	3.9
	46	7.5	4.3	4.2	4.0	3.9
	50	10.0	4.5	4.4	4.0	3.9
	55	12.5	4.7	4.6	4.0	3.9
60	15.5	4.8	4.6	4.0	3.9	
40 (4.5)	-4	-20.0	3.3	3.2	3.0	3.0
	5	-15.0	3.5	3.4	3.3	3.2
	14	-10.0	3.8	3.7	3.6	3.5
	23	-5.0	4.3	4.2	4.0	3.9
	32	0.0	4.7	4.6	4.4	4.4
	37	2.5	5.0	4.8	4.7	4.6
	43	6.0	5.1	5.0	5.0	4.9
	46	7.5	5.4	5.3	5.0	4.9
	50	10.0	5.7	5.5	5.0	4.9
	55	12.5	5.9	5.8	5.0	4.9
60	15.5	6.1	5.8	5.0	4.9	
50 (5.6)	-4	-20.0	4.1	4.0	3.8	3.7
	5	-15.0	4.4	4.2	4.1	4.0
	14	-10.0	4.7	4.6	4.5	4.4
	23	-5.0	5.4	5.2	5.0	4.9
	32	0.0	5.9	5.8	5.5	5.5
	37	2.5	6.2	6.0	5.9	5.8
	43	6.0	6.4	6.3	6.2	6.1
	46	7.5	6.8	6.7	6.2	6.1
	50	10.0	7.1	6.9	6.2	6.1
	55	12.5	7.4	7.2	6.2	6.1
60	15.5	7.6	7.2	6.2	6.1	
63 (7.1)	-4	-20.0	5.2	5.0	4.8	4.7
	5	-15.0	5.6	5.4	5.2	5.1
	14	-10.0	6.0	5.8	5.7	5.6
	23	-5.0	6.8	6.6	6.3	6.2
	32	0.0	7.5	7.4	7.0	7.0
	37	2.5	7.9	7.7	7.4	7.4
	43	6.0	8.2	8.0	7.9	7.8
	46	7.5	8.6	8.5	7.9	7.8
	50	10.0	9.0	8.8	7.9	7.8
	55	12.5	9.4	9.2	7.9	7.8
60	15.5	9.7	9.2	7.9	7.8	

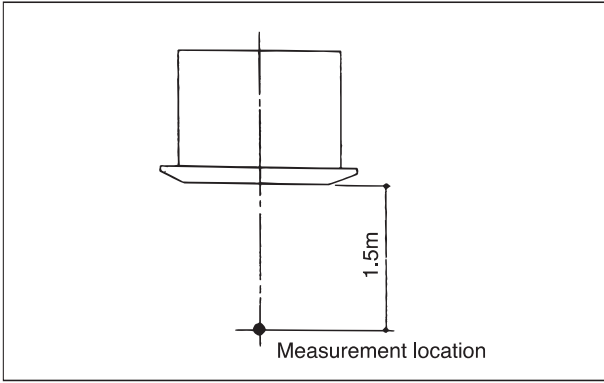
Model size (Rated kW)	Outdoor air temp.		Indoor air temp.			
			59 °FDB	68 °FDB	77 °FDB	81 °FDB
			15.0°CDB	20.0°CDB	25.0°CDB	27.0°CDB
	°FWB	°CWB	SHC	SHC	SHC	SHC
80 (9.0)	-4	-20.0	6.5	6.3	6.0	5.9
	5	-15.0	7.0	6.7	6.5	6.4
	14	-10.0	7.5	7.3	7.1	7.0
	23	-5.0	8.5	8.3	7.9	7.8
	32	0.0	9.4	9.2	8.8	8.7
	37	2.5	9.9	9.6	9.3	9.2
	43	6.0	10.2	10.0	9.9	9.7
	46	7.5	10.8	10.6	9.9	9.7
	50	10.0	11.3	11.0	9.9	9.7
	55	12.5	11.8	11.5	9.9	9.7
60	15.5	12.1	11.5	9.9	9.7	
100 (11.2)	-4	-20.0	8.1	7.9	7.5	7.4
	5	-15.0	8.8	8.4	8.1	8.0
	14	-10.0	9.4	9.1	8.9	8.8
	23	-5.0	10.6	10.4	9.9	9.8
	32	0.0	11.8	11.5	11.0	10.9
	37	2.5	12.4	12.0	11.6	11.5
	43	6.0	12.8	12.5	12.4	12.1
	46	7.5	13.5	13.3	12.4	12.1
	50	10.0	14.1	13.8	12.4	12.1
	55	12.5	14.8	14.4	12.4	12.1
60	15.5	15.1	14.4	12.4	12.1	
125 (14.0)	-4	-20.0	10.4	10.1	9.6	9.4
	5	-15.0	11.2	10.7	10.4	10.2
	14	-10.0	12.0	11.7	11.4	11.2
	23	-5.0	13.6	13.3	12.6	12.5
	32	0.0	15.0	14.7	14.1	13.9
	37	2.5	15.8	15.4	14.9	14.7
	43	6.0	16.3	16.0	15.8	15.5
	46	7.5	17.3	17.0	15.8	15.5
	50	10.0	18.1	17.6	15.8	15.5
	55	12.5	18.9	18.4	15.8	15.5
60	15.5	19.4	18.4	15.8	15.5	

kcal/h = kW x 860, Btu/h = kW x 3,412



## 3-1. Sound levels

PLFY-P-VCM-E,VAM-E



\* Measured in anechoic room.

Sound level at anechoic room : Low-Mid-High

	Sound level dB (A)
PLFY-P20VCM-E	28-31-35
PLFY-P25VCM-E	28-31-37
PLFY-P32VCM-E	29-33-38
PLFY-P40VCM-E	30-34-39

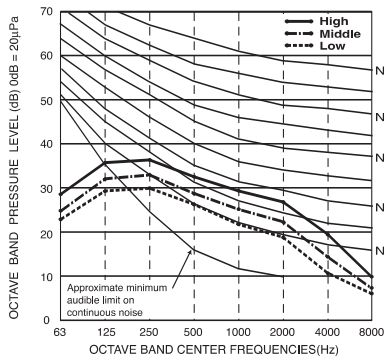
Sound level at anechoic room : Low-Mid-High

	Sound level dB (A)
PLFY-P32VAM-E	27-28-29-31
PLFY-P50VAM-E	27-28-30-32
PLFY-P40VAM-E	28-29-31-33
PLFY-P63VAM-E	30-32-35-37
PLFY-P80VAM-E	33-36-39-41
PLFY-P125VAM-E	35-38-41-43

## 3-2. NC curves

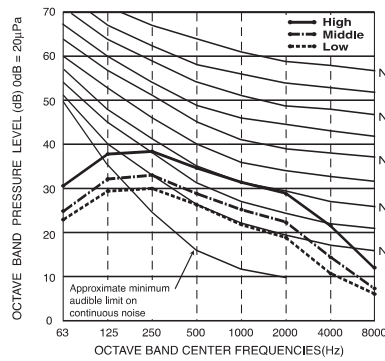
**PLFY-P20VCM-E**

External static pressure : 0Pa  
Power source : 220,230,240V, 50Hz



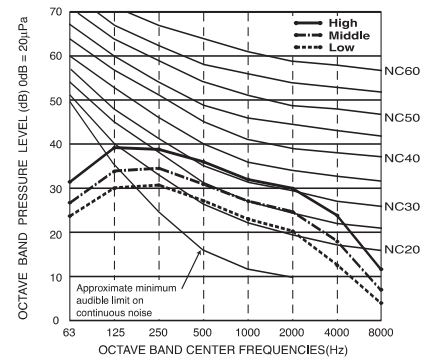
**PLFY-P25VCM-E**

External static pressure : 0Pa  
Power source : 220,230,240V, 50Hz



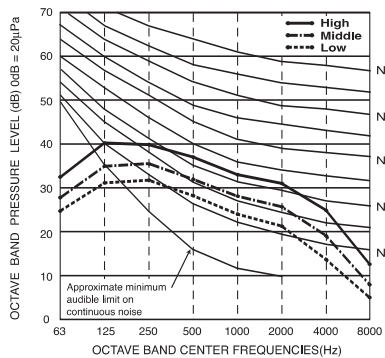
**PLFY-P32VCM-E**

External static pressure : 0Pa  
Power source : 220,230,240V, 50Hz



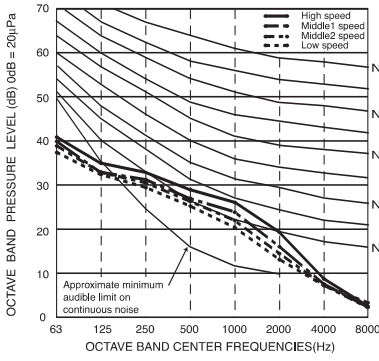
**PLFY-P40VCM-E**

External static pressure : 0Pa  
Power source : 220,230,240V, 50Hz

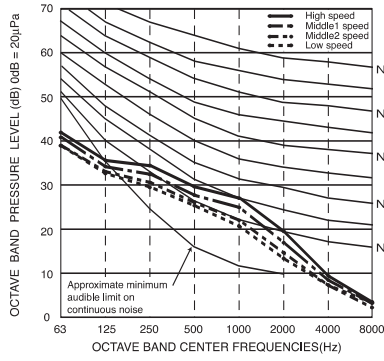


## 3-2. NC curves

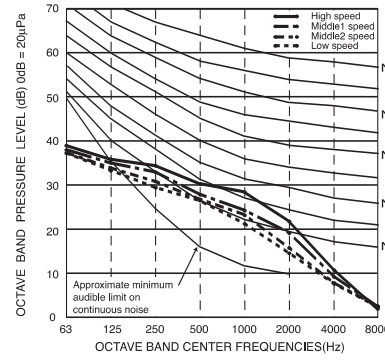
**PLFY-P32VAM-E**  
 External static pressure : 0Pa  
 Power source : 220,230,240V, 50Hz / 220V, 60Hz



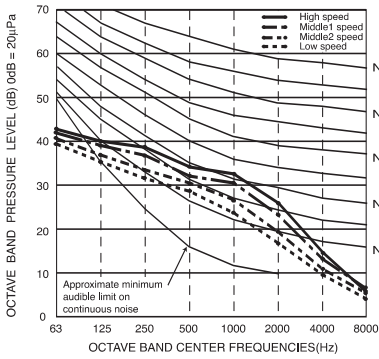
**PLFY-P40,50VAM-E**  
 External static pressure : 0Pa  
 Power source : 220,230,240V, 50Hz / 220V, 60Hz



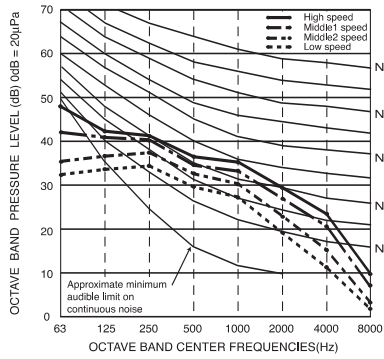
**PLFY-P63VAM-E**  
 External static pressure : 0Pa  
 Power source : 220,230,240V, 50Hz / 220V, 60Hz



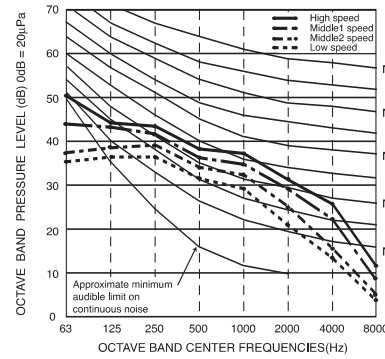
**PLFY-P80VAM-E**  
 External static pressure : 0Pa  
 Power source : 220,230,240V, 50Hz / 220V, 60Hz



**PLFY-P100VAM-E**  
 External static pressure : 0Pa  
 Power source : 220,230,240V, 50Hz / 220V, 60Hz

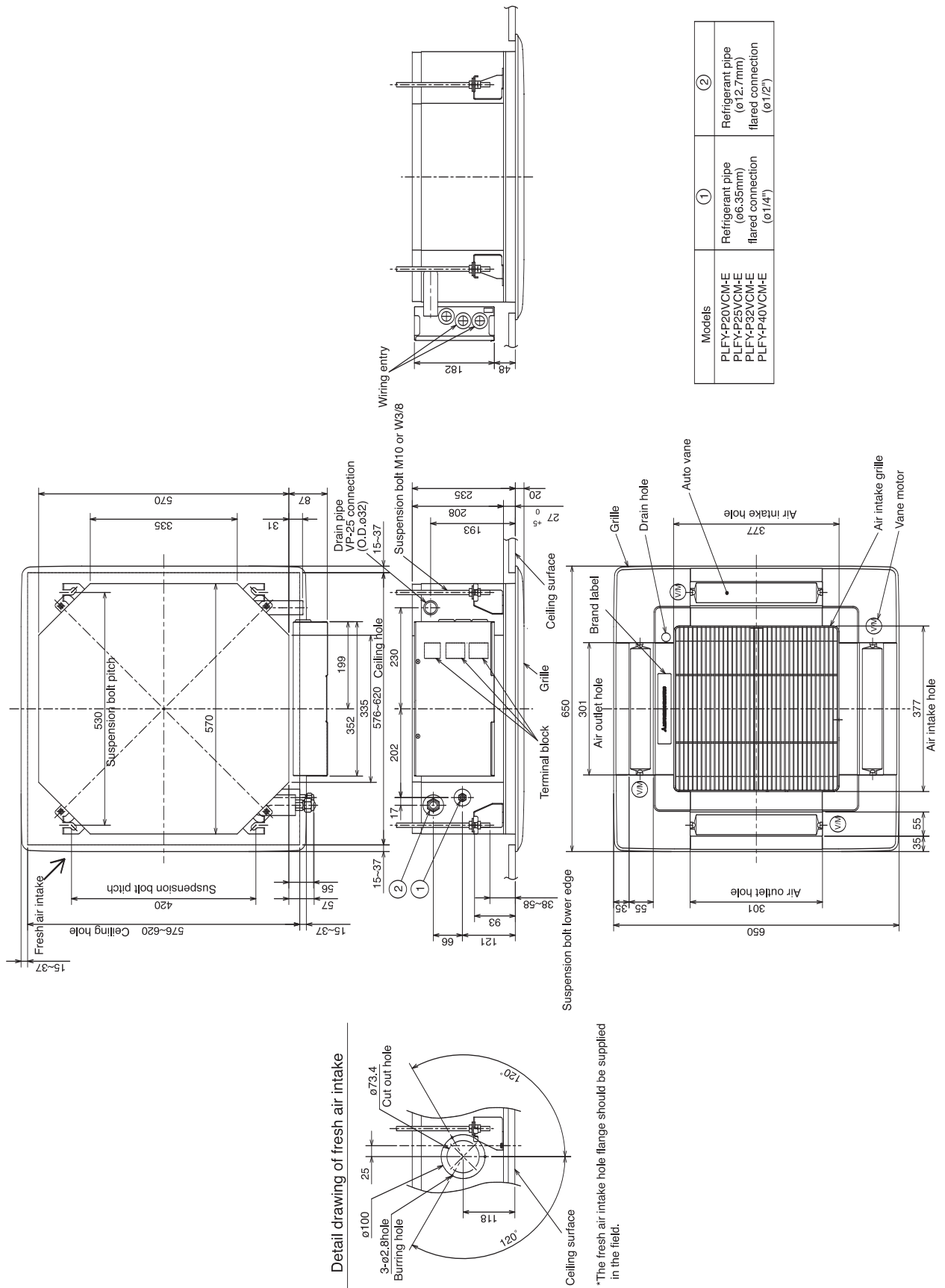


**PLFY-P125VAM-E**  
 External static pressure : 0Pa  
 Power source : 220,230,240V, 50Hz / 220V, 60Hz



PLFY-P20,25,32,40VCM-E

Drw. : IU-RG01-N654  
Unit : mm



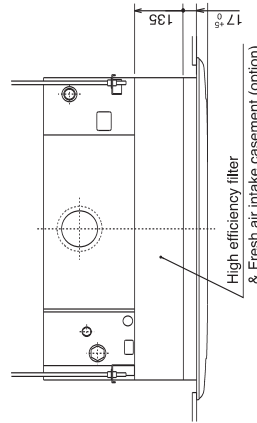
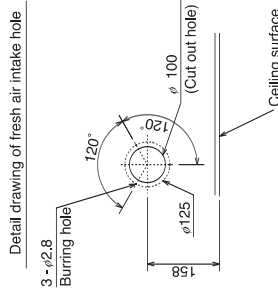
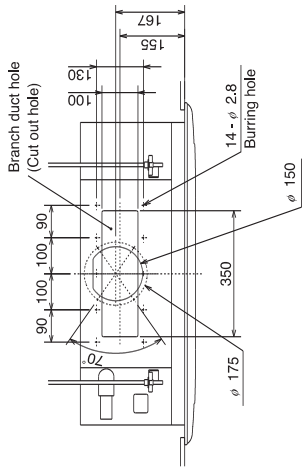
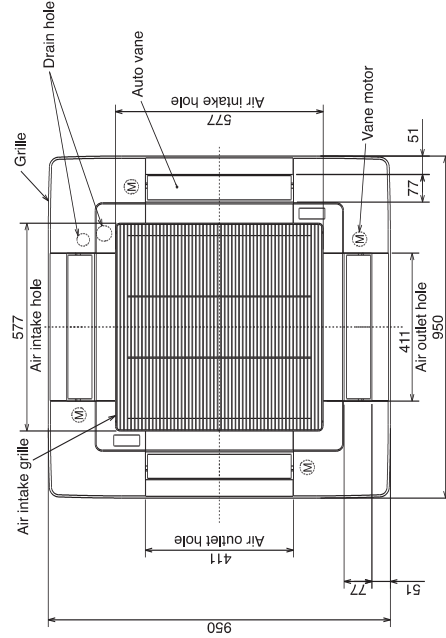
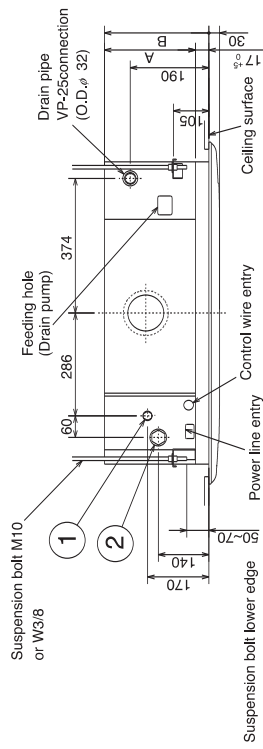
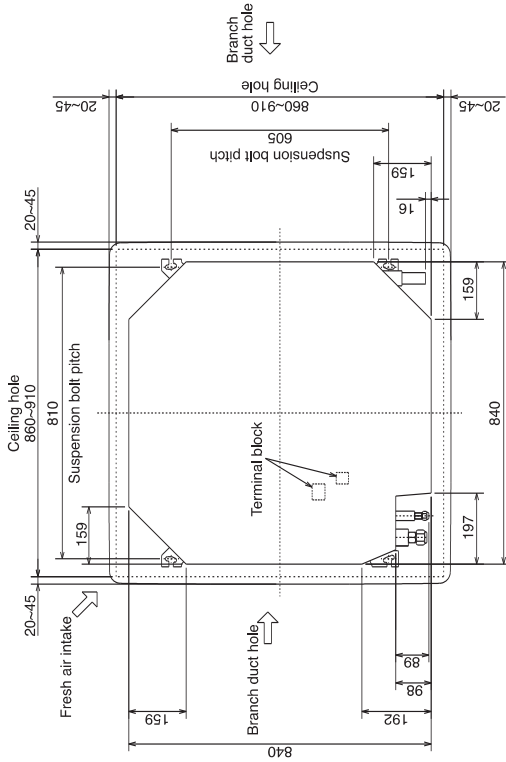
# 4. EXTERNAL DIMENSIONS

R410A Data G2

PLFY-P32,40,50,63,80,100,125VAM-E

Drw. : IU-RG01-N638

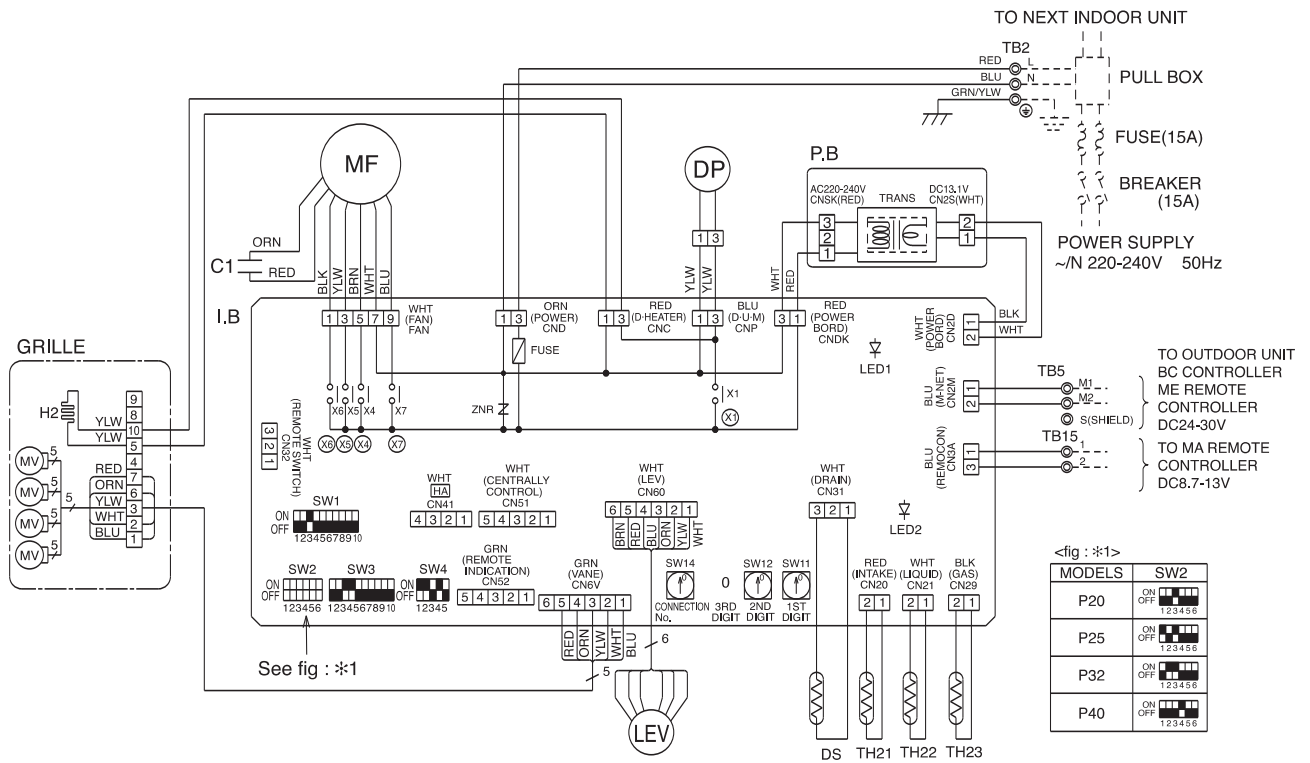
Unit : mm



Models	① Liquid Pipe	② Gas Pipe	A	B
PLFY-P32VAM-E	φ 6.35	φ 12.7	241	258
PLFY-P40VAM-E	φ 6.35(R410A) φ 9.52(R407C, R22)	φ 12.7(R410A) φ 15.88(R407C, R22)	241	258
PLFY-P50VAM-E	φ 6.35(R410A) φ 9.52(R407C, R22)	φ 12.7(R410A) φ 15.88(R407C, R22)	241	258
PLFY-P63VAM-E	φ 9.52	φ 15.88	281	298
PLFY-P80VAM-E	φ 9.52	φ 15.88(R410A) φ 19.05(R407C, R22)	281	298
PLFY-P100VAM-E	φ 9.52	φ 15.88(R410A) φ 19.05(R407C, R22)	281	298
PLFY-P125VAM-E	φ 9.52	φ 15.88(R410A) φ 19.05(R407C, R22)	281	298

PLFY-P20,25,32,40VCM-E

Draw. : IU-RG79-N625



[ LEGEND ]

SYMBOL	NAME	SYMBOL	NAME
I.B	INDOOR CONTROLLER BOARD	C1	CAPACITOR (FAN MOTOR)
CN32	CONNECTOR	DP	DRAIN WATER LIFTING-UP MACHINE
CN41	CONNECTOR	DS	DRAIN SENSOR
CN51	CONNECTOR	H2	DEW PREVENTION HEATER
CN52	CONNECTOR	LEV	LINEAR EXPANSION VALVE
FUSE	FUSE (6.3A/250V)	MF	FAN MOTOR (WITH THERMAL FUSE)
SW1	SWITCH	MV	VANE MOTOR
SW2	SWITCH	TB2	TERMINAL BLOCK
SW3	SWITCH	TB5	TERMINAL BLOCK
SW4	SWITCH	TB15	TERMINAL BLOCK
SW11	SWITCH	TH21	THERMISTOR
SW12	SWITCH	TH22	THERMISTOR
SW14	SWITCH	TH23	THERMISTOR
X1	AUX. RELAY	P.B	INDOOR POWER BOARD
X4	AUX. RELAY		
X5	AUX. RELAY		
X6	AUX. RELAY		
X7	AUX. RELAY		
ZNR	VARIATOR		

Notes:

- At servicing for outdoor unit, always follow the wiring diagram of outdoor unit.
- In case of using MA Remote controller, please connect to TB15. (Remote controller wire is non-polar.)
- In case of using M-NET, please connect to TB5. (Transmission line is non-polar.)
- Symbol[S] of TB5 is the shield wire connection.
- Symbols used in wiring diagram above are, ⊕ :terminal block, □ :connector.
- The setting of the SW2 dip switches differs in the capacity for the detail, refer to the fig : \*1.

LED on indoor board for service

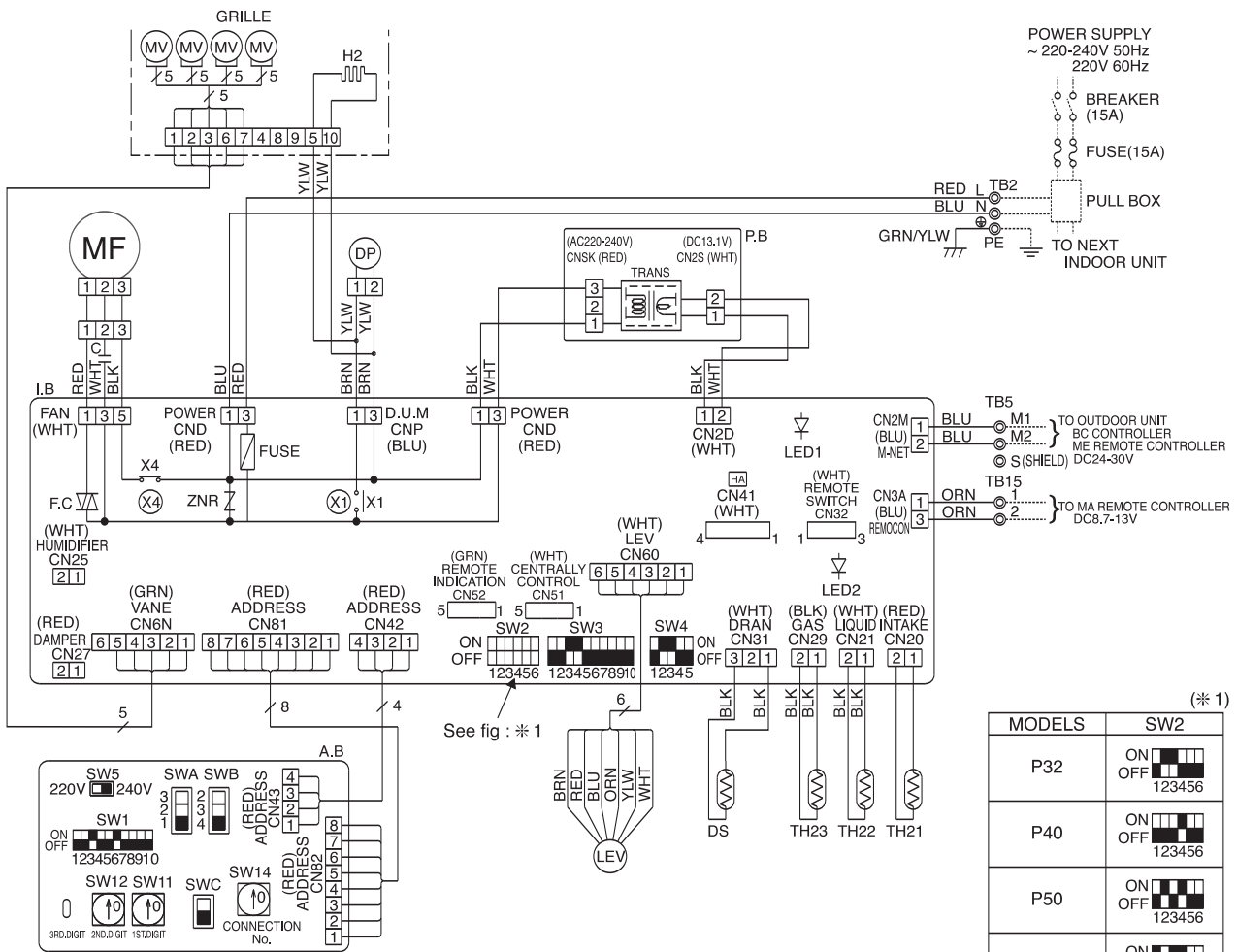
Mark	Meaning	Function
LED1	Main power supply	Main power supply(Indoor unit:220-240V) power on → lamp is lit
LED2	Power supply for MA Remote controller	Power supply for MA Remote controller on → lamp is lit

PLFY-P32,40,50,63,80,100,125VAM-E

Drw. : IU-RG79-A663

<SYMBOL EXPLANATION>

SYMBOL	NAME	SYMBOL	NAME	SYMBOL	NAME	
P.B	INDOOR POWER BOARD	C	CAPACITOR(FAN MOTOR)	TH23	THERMISTOR PIPE TEMPERATURE DETECTION / GAS (0°C/15k, 25°C/5.4k)	
I.B	INDOOR CONTROLLER BOARD	MF	FAN MOTOR(WITH INNER THERMO)	A.B	CIRCUIT BOARD	
CN25	CONNECTOR	HUMIDIFIER	MV	VANE MOTOR	SW1	MODE SELECTION
CN32		REMOTE SWITCH	DP	DRAIN WATER LIFTING-UP MACH	SW5	VOLTAGE SELECTION
CN41		HA TERMINAL-A	DS	DRAIN SENSOR	SW11	ADDRESS SETTING 1ST DIGIT
CN51		CENTRALLY CONTROL	H2	DEW PREVENTION HEATER	SW12	ADDRESS SETTING 2ND DIGIT
CN52		REMOTE INDICATION	TB2	POWER SUPPLY	SW14	CONNECTION No.
SW2	SWITCH	CAPACITY CODE	TB5	TERMINAL BLOCK	SWA	CEILING HEIGHT SELECTOR
SW3		MODE SELECTION	TB15	TRANSMISSION	SWB	DISCHARGE OUTLET NUMBER SELECTOR
SW4		MODEL SELECTION	LEV	LINEAR EXPANSION VALVE	SWC	OPTION SELECTOR
ZNR	VARISTOR	TH21	THERMISTOR			
FUSE	FUSE (6.3A/250V)	TH22	THERMISTOR			
F.C	FAN PHASE CONTROL					
X1	AUX.RELAY	DRAIN PUMP				
X4		FAN MOTOR				
LED1	POWER SUPPLY(I.B)					
LED2	POWER SUPPLY(I.B)					



(\* 1)

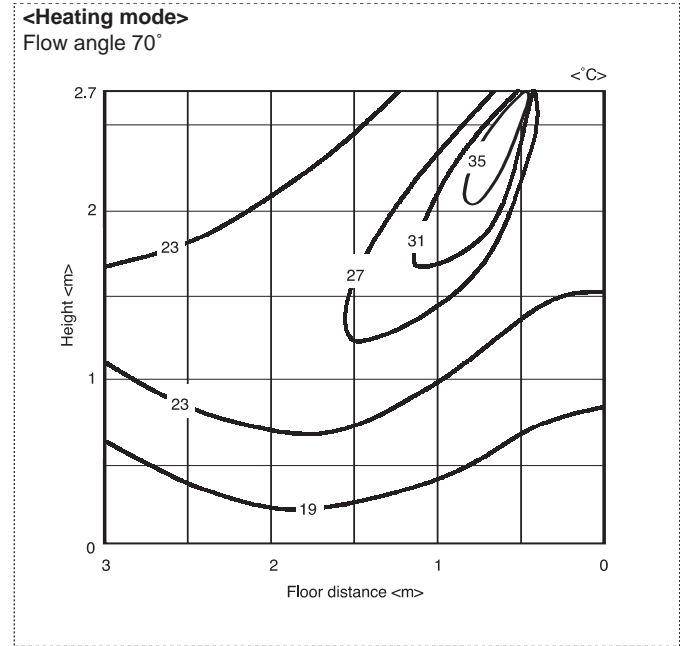
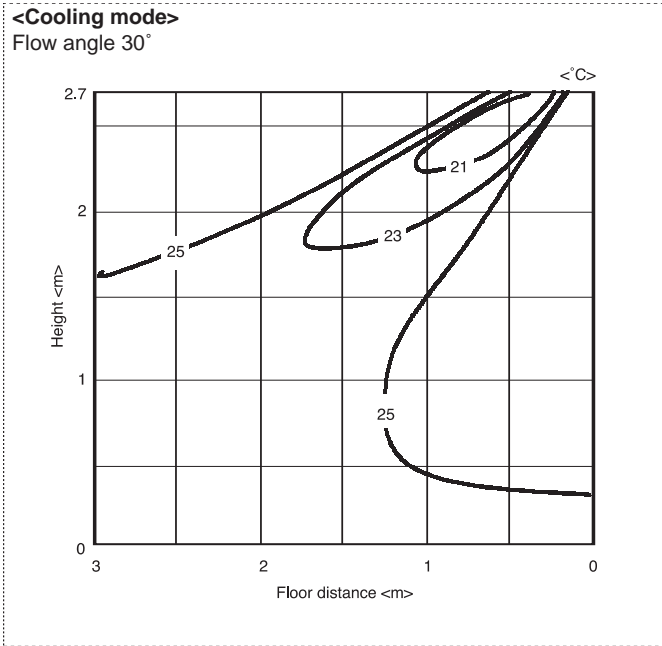
MODELS	SW2
P32	ON OFF 123456
P40	ON OFF 123456
P50	ON OFF 123456
P63	ON OFF 123456
P80	ON OFF 123456
P100	ON OFF 123456
P125	ON OFF 123456

NOTE

- At servicing for outdoor unit, always follow the wiring diagram of outdoor unit.
- Symbol(S) of TB5 is the shield wire connection.
- Symbols used in wiring diagram above are, ⊙: Terminal block, □: Connector.
- The setting of the SW2 dip switches differs in the capacity for the detail, see the table below.
- Please set the switch SW5 according to the power supply.  
Set SW5 to 240V side when the power supply is 230 and 240 volts.  
When the power supply is 220 volts, set SW5 to 220V side.

6-1. Temperature distributions

PLFY-P-VCM-E



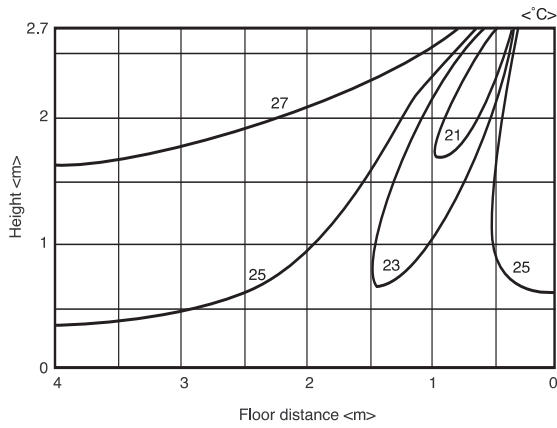
Note : These figures show typical temperature distributions in the conditions above. In the actual installation, they may differ from these figures under the influence of air temperature conditions, ceiling height, cooling/heating load, obstacles, etc.

A  
B  
C  
D  
E  
F  
G  
H  
I  
J  
V<sub>a</sub>  
V<sub>b</sub>  
BC

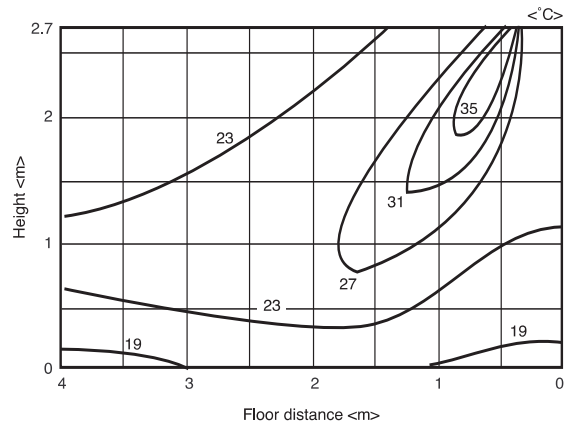
## 6-1. Temperature distributions

PLFY-P-VAM-E

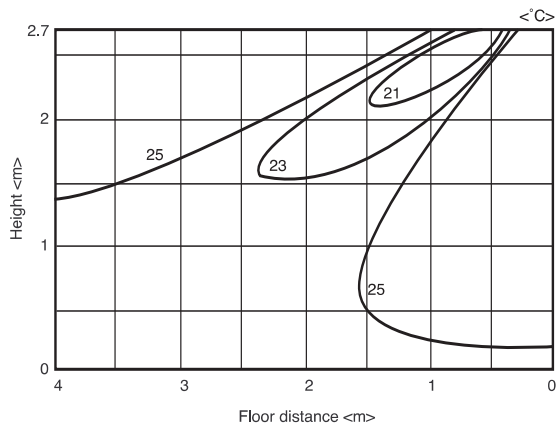
<Cooling mode>  
Flow angle 30°



<Heating mode>  
Flow angle 70°



<Cooling mode>  
Flow angle 70°



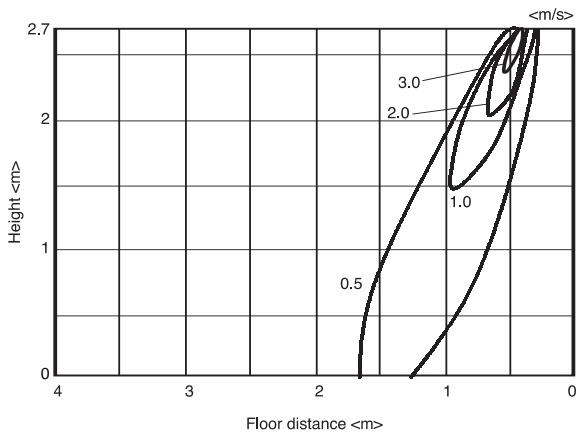
Note : These figures show typical temperature distributions in the conditions above. In the actual installation, they may differ from these figures under the influence of air temperature conditions, ceiling height, cooling/heating load, obstacles, etc.



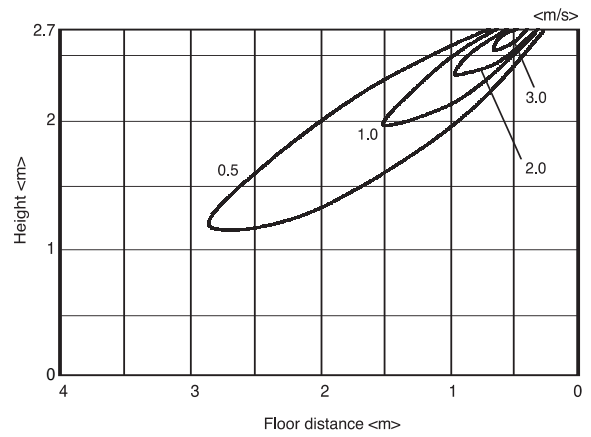
6-2. Airflow distributions

PLFY-P-VCM-E

<Fan mode>  
Flow angle 70°

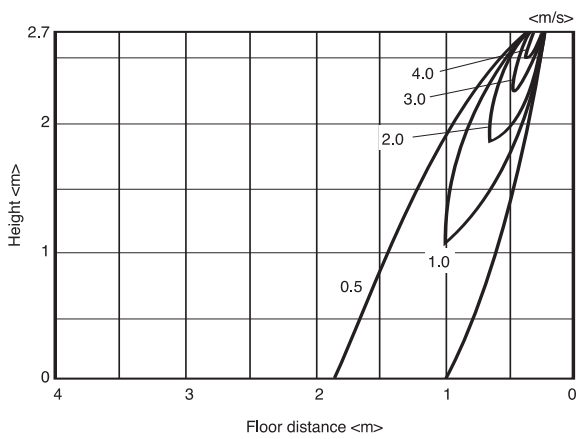


<Fan mode>  
Flow angle 30°

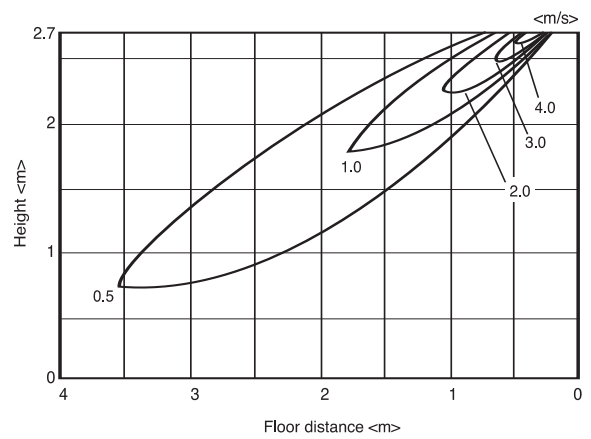


PLFY-P-VAM-E

<Fan mode>  
Flow angle 70°



<Fan mode>  
Flow angle 30°



Note : These figures show typical airflow distributions in the conditions above. In the actual installation, they may differ from these figures under the influence of air temperature conditions, ceiling height, cooling/heating load, obstacles, etc.

Description	Model	Applicable capacity
Decoration panel	SLP-2AA	PLFY-P20,25,32,40VCM-E PLFY-P32,40,50,63,80,100,125VAM-E
Decoration panel	PLP-6AA	
Air outlet shutter plate	PAC-SG06SP-E	
High efficiency filter element	PAC-SG01KF (PAC-SG03TM-E is necessary to use with filter PAC-SG01KF.)	
Multi-function casement	PAC-SG03TM-E	

- A
- B
- C
- D
- E
- F
- G**
- H
- I
- J
- V<sub>a</sub>
- V<sub>b</sub>
- BC

**PLFY-P-VAM-E**

